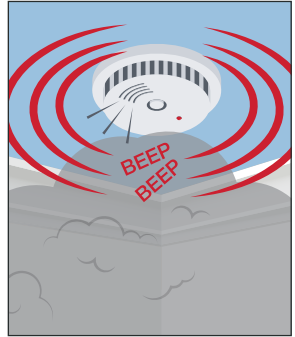


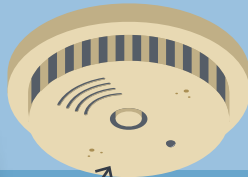


SMOKE ALARMS

Required by Law



Smoke alarms beep loudly when there is a fire



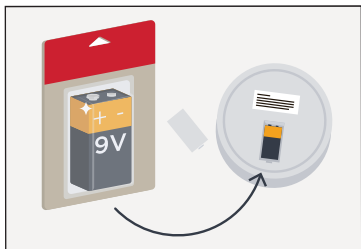
10
YEARS

Replace smoke alarms at least every 10 years

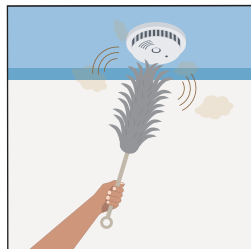
| | | | |
|-----|-----|-----|-----|
| JAN | FEB | MAR | APR |
| ⊗ | ⊗ | ⊗ | ⊗ |
| MAY | JUN | JUL | AUG |
| ⊗ | ⊗ | ⊗ | ⊗ |
| SEP | OCT | NOV | DEC |
| ⊗ | ⊗ | ⊗ | ⊗ |



Test every month

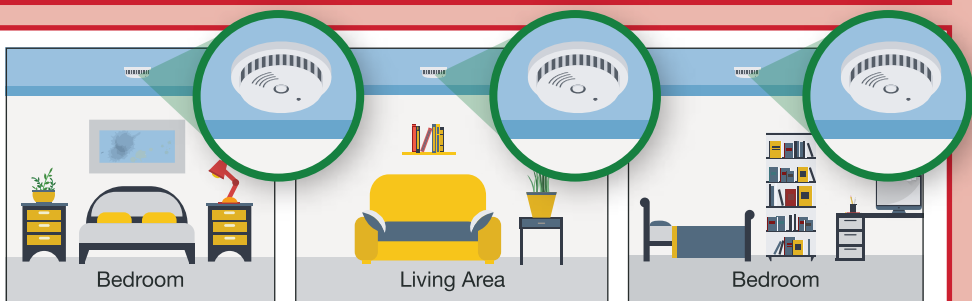


| | | | |
|-----|-----|-----|-----|
| JAN | FEB | MAR | APR |
| | | | ⊗ |
| MAY | JUN | JUL | AUG |
| | | | |
| SEP | OCT | NOV | DEC |
| | | | |

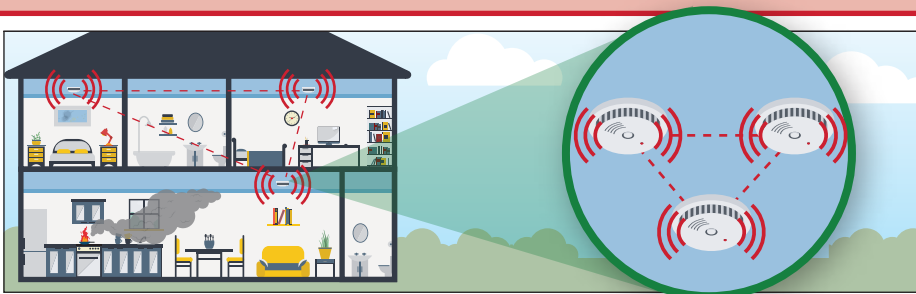


Replace 9 volt batteries every year

Clean every year



You should have a working smoke alarm in every bedroom and living area



You should connect your smoke alarms to each other so that when one sounds, they all sound. We call this **interconnected**