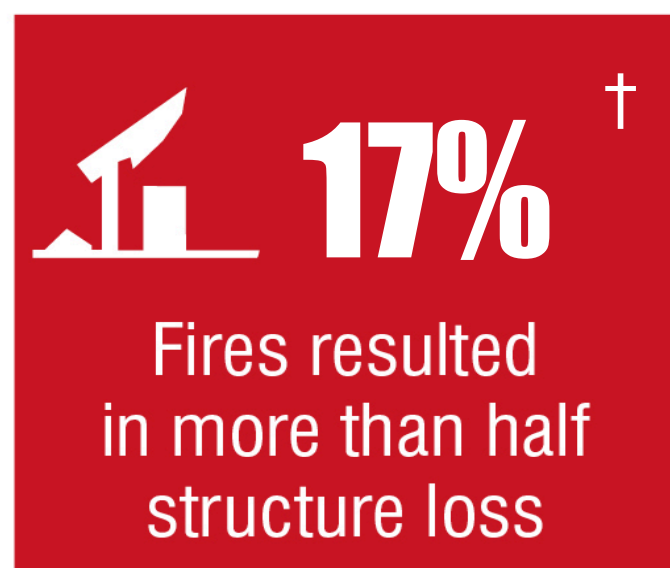
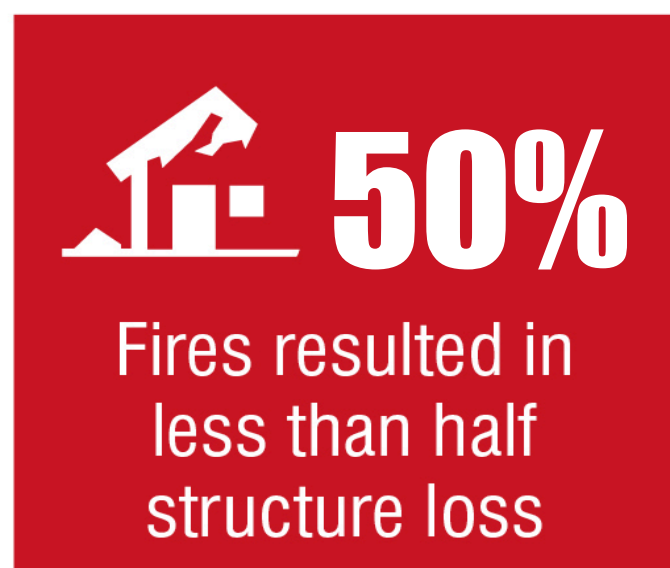
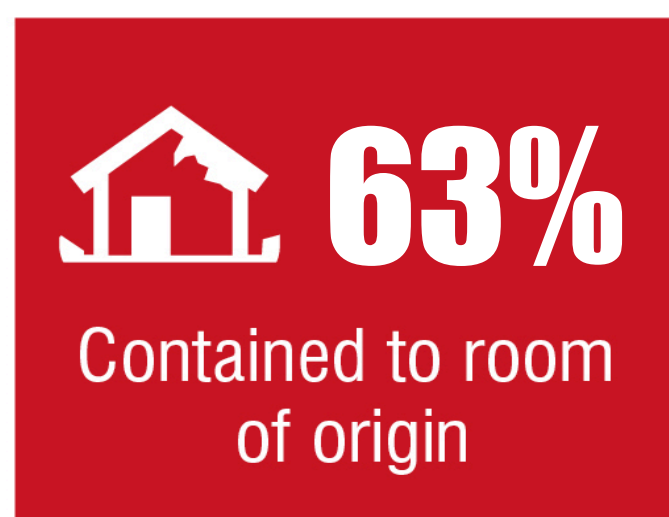


OUTCOMES

Statistics from 1 October 2025 to 31 December 2025



* this figure may change based on the Coroner's findings

** this figure is based on reported fire related injuries only. Self-admission to hospital is not included.

† this figure includes complete structure loss

RESPONSE ACTIVITY



PREVENTION AND PREPAREDNESS ACTIVITY

