

# RURAL GARDEN

LANDSCAPING FOR BUSHFIRE:  
GARDEN DESIGN & PLANT SELECTION



[cfa.vic.gov.au](http://cfa.vic.gov.au)

OUR COMMUNITY • OUR CFA



**WINDBREAK**  
*Casuarina cunninghamiana* (River Oak)

Paddock

Paddock

TENNIS COURT

**HEDGE**  
*Escallonia 'Pink Pixie'*

**PERENNIAL DISPLAY**  
*Achillea millefolium* cv. (Yarrow)  
*Anthemis montana*  
*Beschorneria yuccoides* (Mexican Lily)  
*Festuca glauca* (Blue Fescue)  
*Dahlia 'Le Coco'*  
*Euphorbia 'Compton Ash'*  
*Salvia nemorosa*  
*Tulbaghia violacea* (Society Garlic)

**WINDBREAK**  
*Acmena smithii* (Lily Pilly)

SHED

1

**ORCHARD**  
*Prunus salicina* (Japanese Plum)

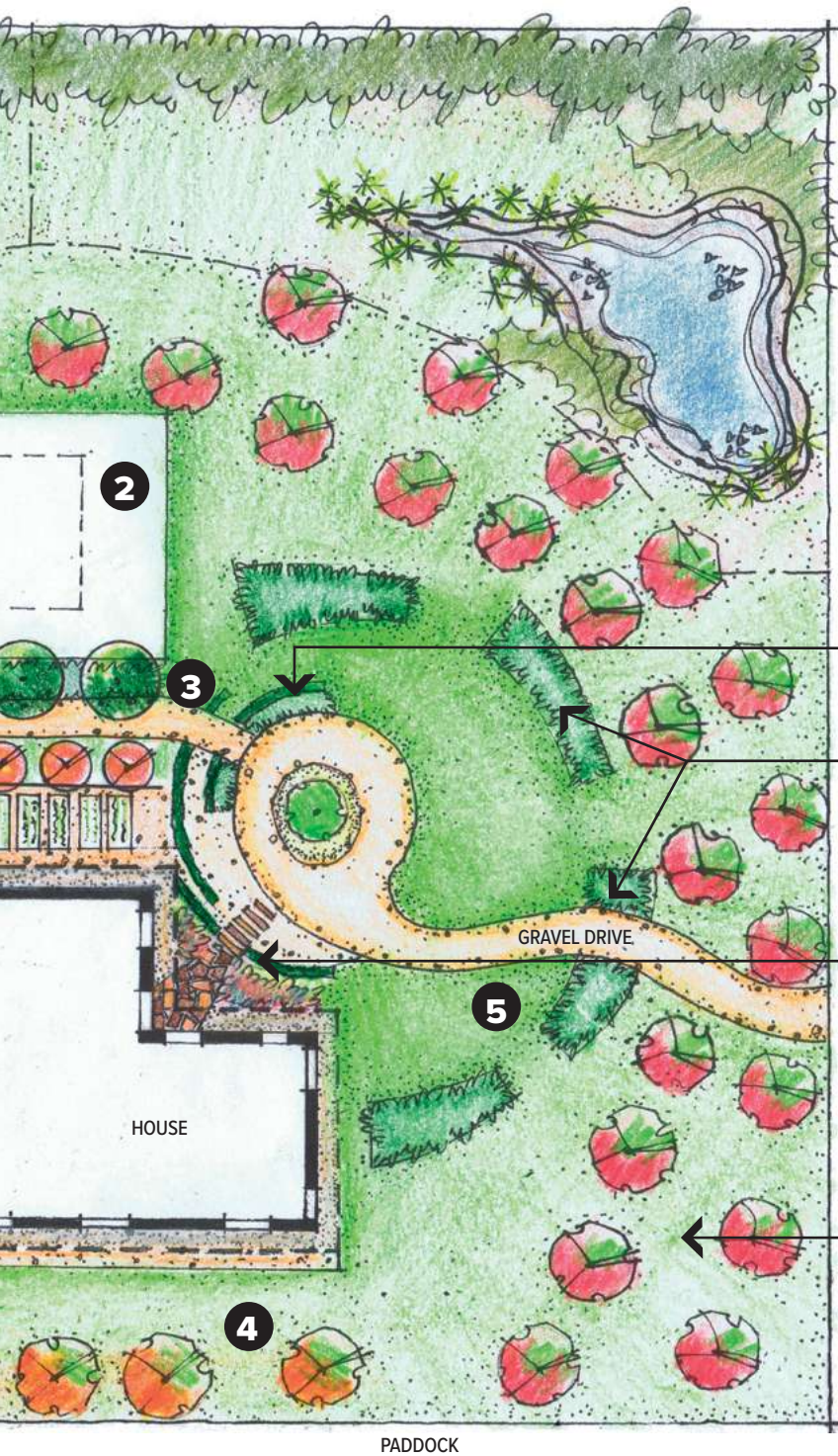


1

Use decorative paving around the house to keep plants away from windows, doors and other vulnerable parts of the building.

2

Locate areas of low fuel such as lawn, dams and tennis courts between the house and the most likely direction of a bushfire.



**MOST LIKELY  
FIRE DIRECTION**



**HEDGE**

*Buxus sempervirens* 'Suffruticosa' (Dutch Box)

**HERBACEOUS PLANTINGS**

*Festuca glauca* (Blue Fescue)  
*Dianella caerulea* (Paroo Lily)  
*Lomandra longifolia* (Spiny-headed Mat Rush)  
*Phormium* 'Apple Green' (New Zealand Flax)  
*Strelitzia reginae* (Bird of Paradise)

**SUCCULENTS**

*Aeonium arboreum* (Tree Aeonium)  
*Agave attenuata* (Swans Neck Agave)  
*Cotyledon orbiculata* (Pigs Ears)  
*Echeveria* cvs. (Hen and Chickens)  
*Tradescantia pallida* (Purple Heart)  
*Kleinia mandraliscae* (Blue Chalk Sticks)  
*Sedum pachyphyllum* (Jelly Beans)  
*Sedum* 'Matrona'

**ORCHARD**

*Prunus avium* (Sweet Cherry)

**3**

Avoid planting shrubs under trees. Instead use groundcovers with low flammability and low-growing succulents under trees to provide maximum separation between fuel at the ground level and the tree canopy.

**4**

Plant trees a distance of at least 1.5 times their mature height from the house. They must not overhang the building.

**5**

Use gravel paths and lawn to provide separation between garden beds. This breaks up the continuity of vegetation in the garden to prevent fuel corridors.

The location and arrangement of vegetation within a garden has a greater impact on how a bushfire will spread than the flammability of individual plants.

Use these four principles when designing your garden to reduce the risk of the garden contributing to house loss in a bushfire.

- **create defensible space**
- **remove flammable objects from around the house**
- **break up fuel continuity**
- **carefully select, locate and maintain trees**

Remember, a holistic approach to bushfire preparation is critical. While garden design and maintenance can improve the chances of a house surviving a bushfire, do not rely on these in isolation. In bushfire risk areas, on **Extreme** and **Catastrophic** days leaving early is always the safest option.

For more detail and to use CFA's online Plant Selection Key visit **[cfa.vic.gov.au/plants](https://cfa.vic.gov.au/plants)** or call the VicEmergency Hotline on **1800 226 226**