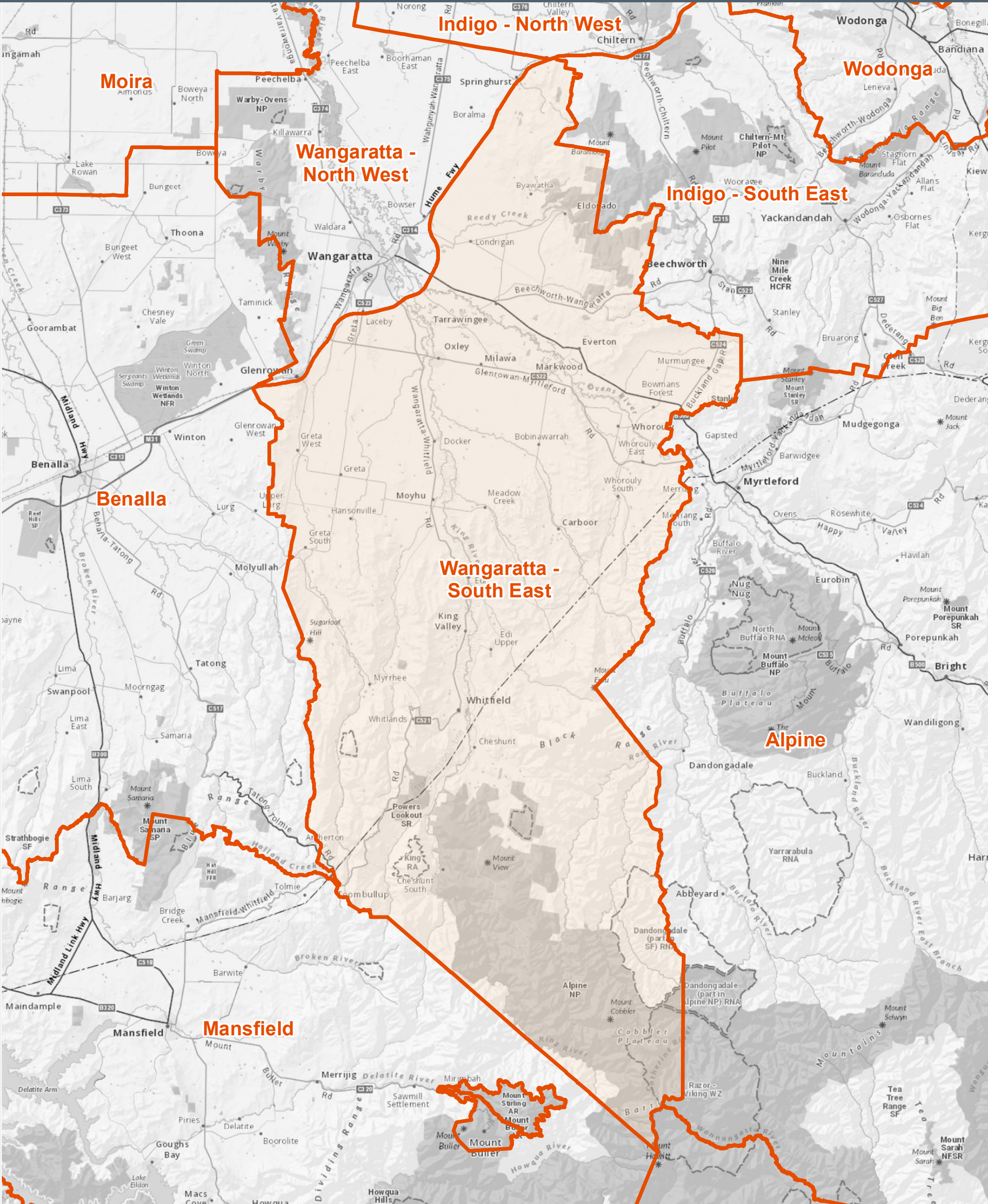


Fire Danger Period Areas: Wangaratta - South East



0 5 10 15 20 25 Kilometers

Disclaimer:
This map is a snapshot generated from Victorian Government data as well as data from various other sources. This does not guarantee that the publication is without flaw of any kind or is wholly appropriate for your particular purposes and therefore disclaims all liability for error, loss or damage which may arise from reliance upon it. All persons accessing this information should make appropriate enquiries to assess the currency of the data.

Notes:
Some municipalities (shire or council) are split into smaller areas for Fire Danger Period Declarations.
Some municipalities overlap with the former Metropolitan Fire District (MFD) as at 30 June 2020. Fire Danger Period Restrictions do not apply in the former MFD.
This map will display both these situations if applicable in this area.



Legend
 Fire Danger Period Areas

Job ID: FDP 2024/2025
Date Prepared: 20/10/2024