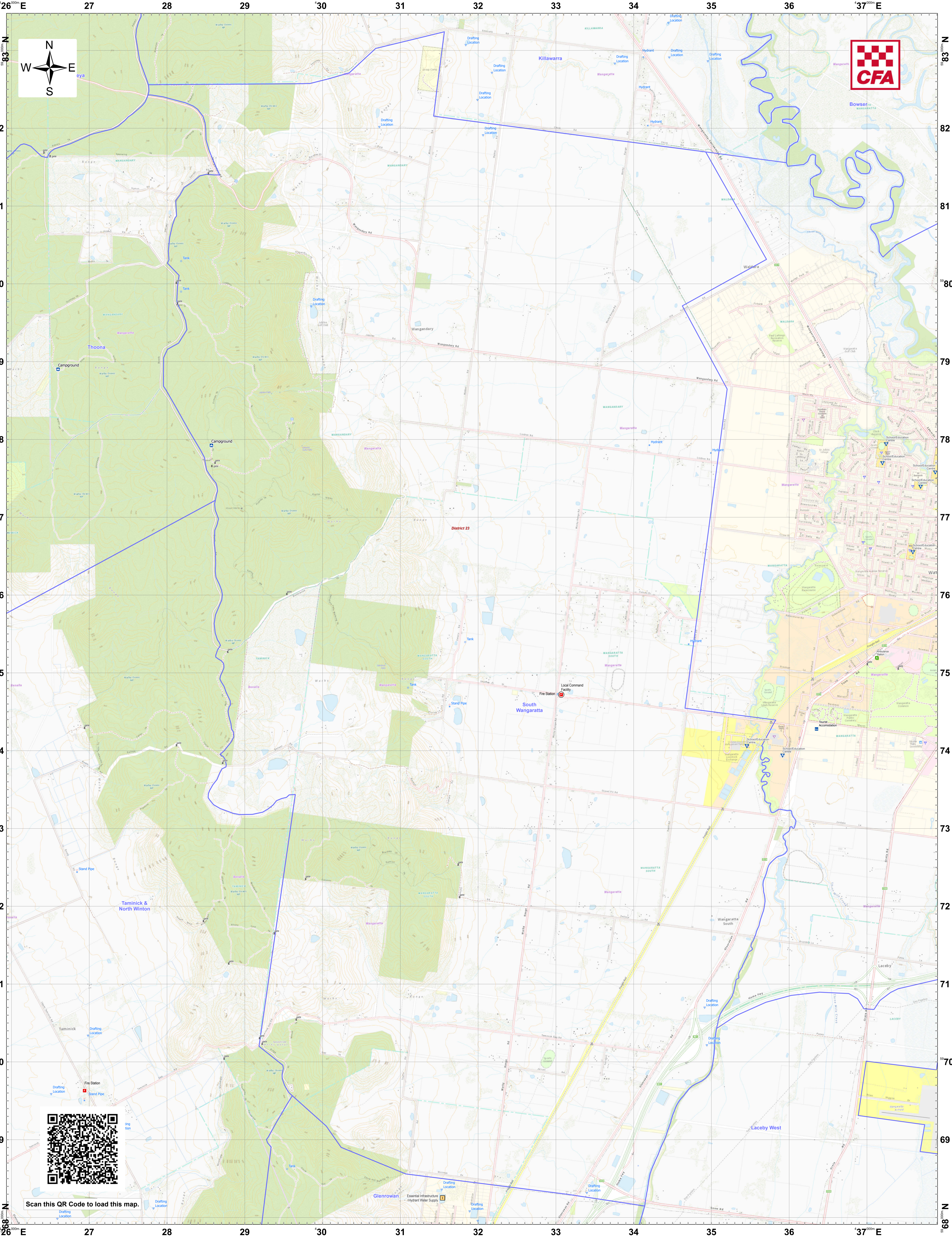
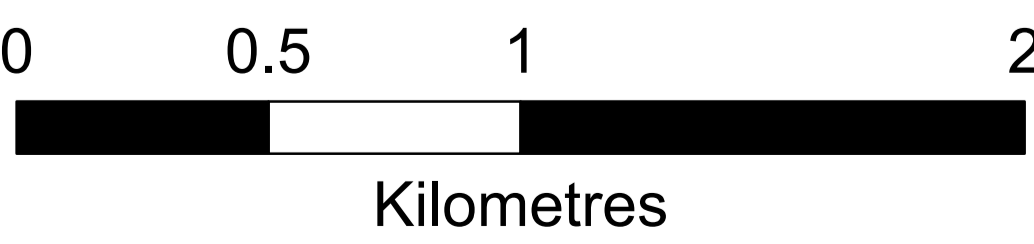


LRD Map: South Wangaratta Brigade in District 23 Fire Season 2024-2025



Legend

LRD Locations		LRD Lines		LRD Areas	
	Operational Point		Proposed Control Line		Operational High Risk Environment
	Community Alert System		Principal Roads		Anchor Point/Safety Zone
	Relief Centres		Secondary Roads		Proposed Sector
	Recovery Centre				
	Medical Centres				
	Proposed TMP				
	Proposed Staging Area				
	Helicopter Landing Area				
	Essential - Infrastructure				
	Essential - Community				
	Essential - Environment				
	Local Knowledge				
	Drafting Point				
	Hydrant				
	Tank				
	Stand Pipe				
	CFA Brigade Boundaries				
	FRV Maintenance Area				
	CFA District Footprints				



Disclaimer:
This map is a snapshot generated from Victorian Government data as well as data from various other sources. This does not guarantee that the publication is without flaw of any kind or is wholly appropriate for your particular purposes and therefore disclaims all liability for error, loss or damage which may arise from reliance upon it. All persons accessing this information should make appropriate enquiries to assess the currency of the data.

Coordinate System: WGS 1984 UTM Zone 55S

Date Created: 26 Nov 2024