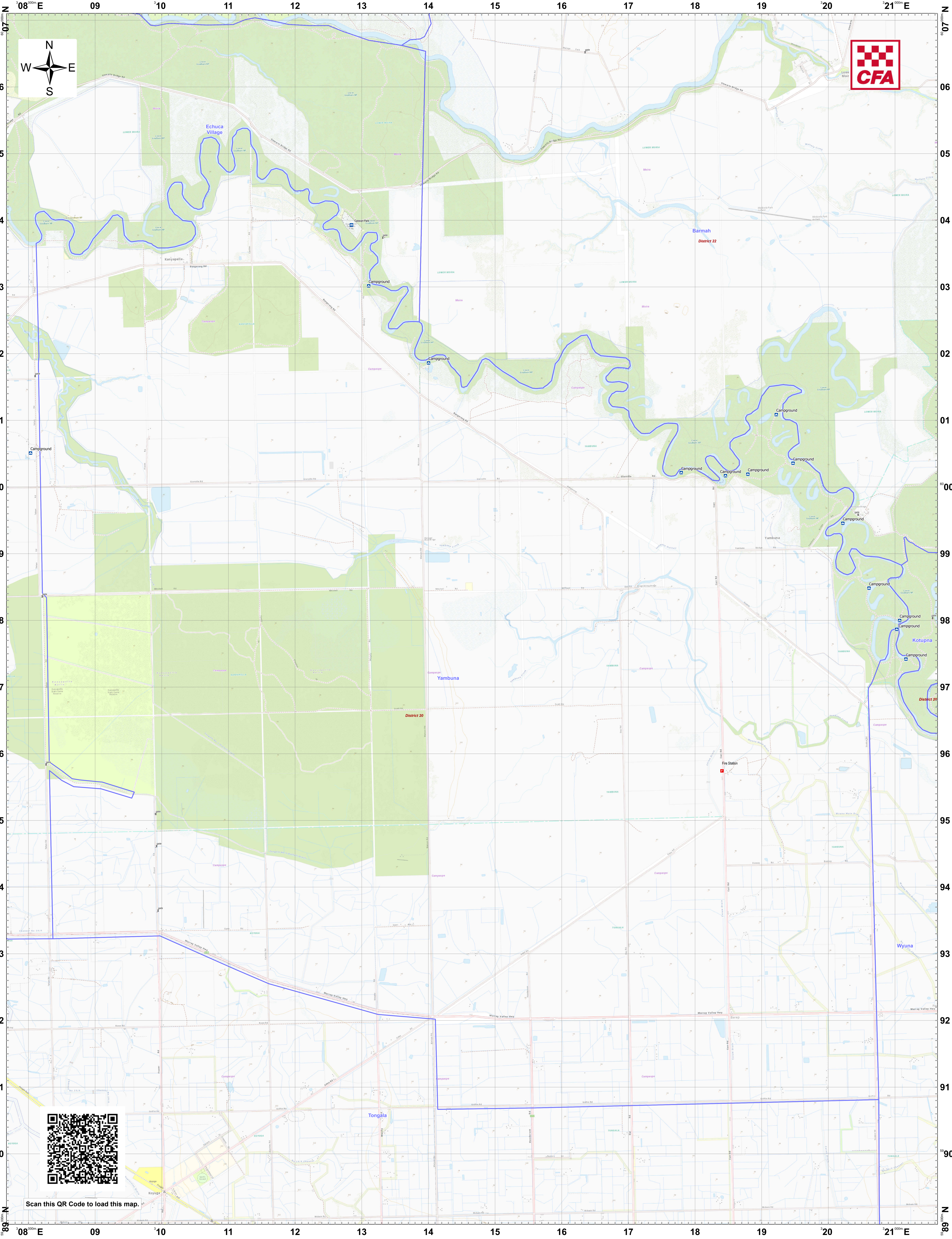
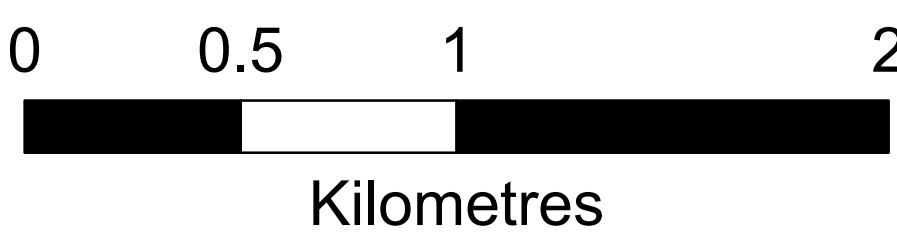


LRD Map: Yambuna Brigade in District 20 Fire Season 2024-2025



Legend

LRD Locations		LRD Lines		LRD Areas	
	Operational Point		Medical Centres		Essential - Infrastructure
	Community Alert System		Proposed TMP		Essential - Community
	Relief Centres		Proposed Staging Area		Essential - Environment
	Recovery Centre		Helicopter Landing Area		Local Knowledge
			Drafting Point		Proposed Control Line
			Hydrant		Principal Roads
			Tank		Secondary Roads
			Stand Pipe		Operational High Risk Environment
					Anchor Point/Safety Zone
					Proposed Sector
					CFA Brigade Boundaries
					FRV Maintenance Area
					CFA District Footprints



Disclaimer:
This map is a snapshot generated from Victorian Government data as well as data from various other sources. This does not guarantee that the publication is without flaw of any kind or is wholly appropriate for your particular purposes and therefore disclaims all liability for error, loss or damage which may arise from reliance upon it. All persons accessing this information should make appropriate enquiries to assess the currency of the data.

Coordinate System: WGS 1984 UTM Zone 55S
Date Created: 26 Nov 2024