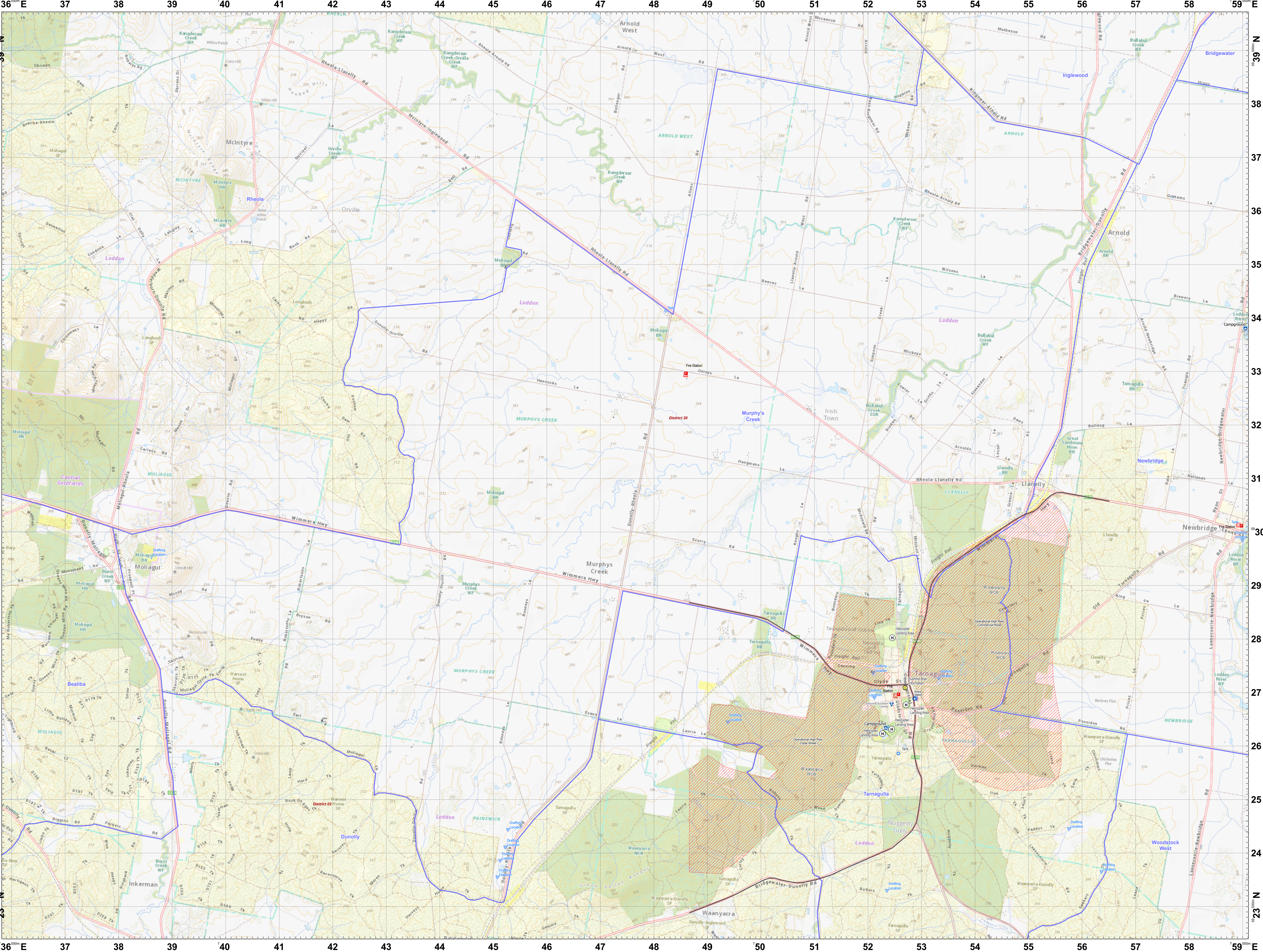


LRD Map: Murphy's Creek Brigade in District 20 Fire Season 2024-2025

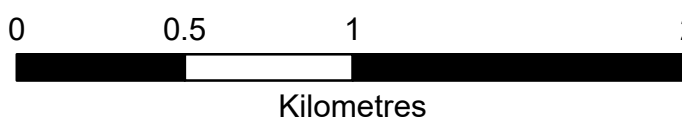


Scan this QR Code from a mobile device to load this map.



- Legend**
- LRD Locations**
- Operational Point
 - Community Alert System
 - Relief Centres
 - Recovery Centre
 - Medical Centres
 - Proposed TMP
 - Proposed Staging Area
 - Helicopter Landing Area
 - Essential - Infrastructure
 - Essential - Community
 - Essential - Environment
 - Local Knowledge
- LRD Lines**
- Proposed Control Line
 - Principal Roads
 - Secondary Roads
- LRD Areas**
- Operational High Risk Environment
 - Anchor Point/Safety Zone
 - Proposed Sector
 - CFA Brigade Response Boundaries
 - FRV Maintenance Area

Disclaimer:
This map is a snapshot generated from Victorian Government datasets as well as data from various other sources. This does not guarantee that the publication is without flaw of any kind or is wholly appropriate for your particular purposes and therefore disclaims all liability for error, loss or damage which may arise from reliance upon it. All persons accessing this information should make appropriate enquiries to assess the currency of the data.



1:22,500

Coordinate System: GDA2020 MGA Zone 54

Date Created: 26 Nov 2024