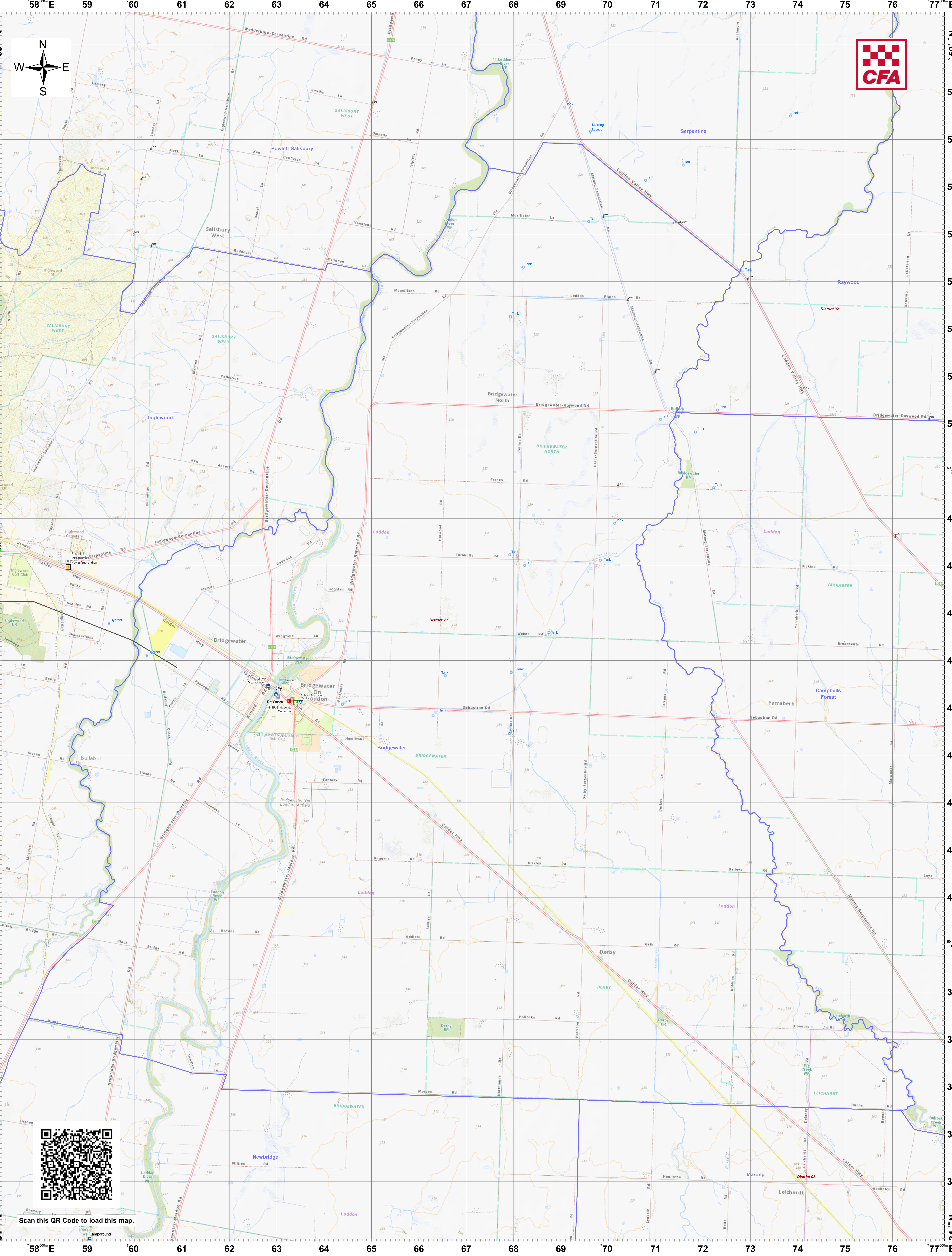


LRD Map: Bridgewater Brigade in District 20 Fire Season 2024-2025



Legend

LRD Locations

Operational Point

Community Alert System

Relief Centres

Recovery Centre

Medical Centres

Proposed TMP

Proposed Staging Area

Helicopter Landing Area

Essential - Infrastructure

Essential - Community

Essential - Environment

Local Knowledge

Drafting Point

Hydrant

Tank

Stand Pipe

Proposed Control Line

Principal Roads

Secondary Roads

LRD Lines

Proposed Sector

LRD Areas

Operational High Risk Environment

Anchor Point/Safety Zone

Proposed Sector

CFA Brigade Boundaries

FRV Maintenance Area

CFA District Footprints

Disclaimer:
This map is a snapshot generated from Victorian Government data as well as data from various other sources. This does not guarantee that the publication is without flaw of any kind or is wholly appropriate for your particular purposes and therefore disclaims all liability for error, loss or damage which may arise from reliance upon it. All persons accessing this information should make appropriate enquiries to assess the currency of the data.

Coordinate System: WGS 1984 UTM Zone 54S

Date Created: 26 Nov 2024