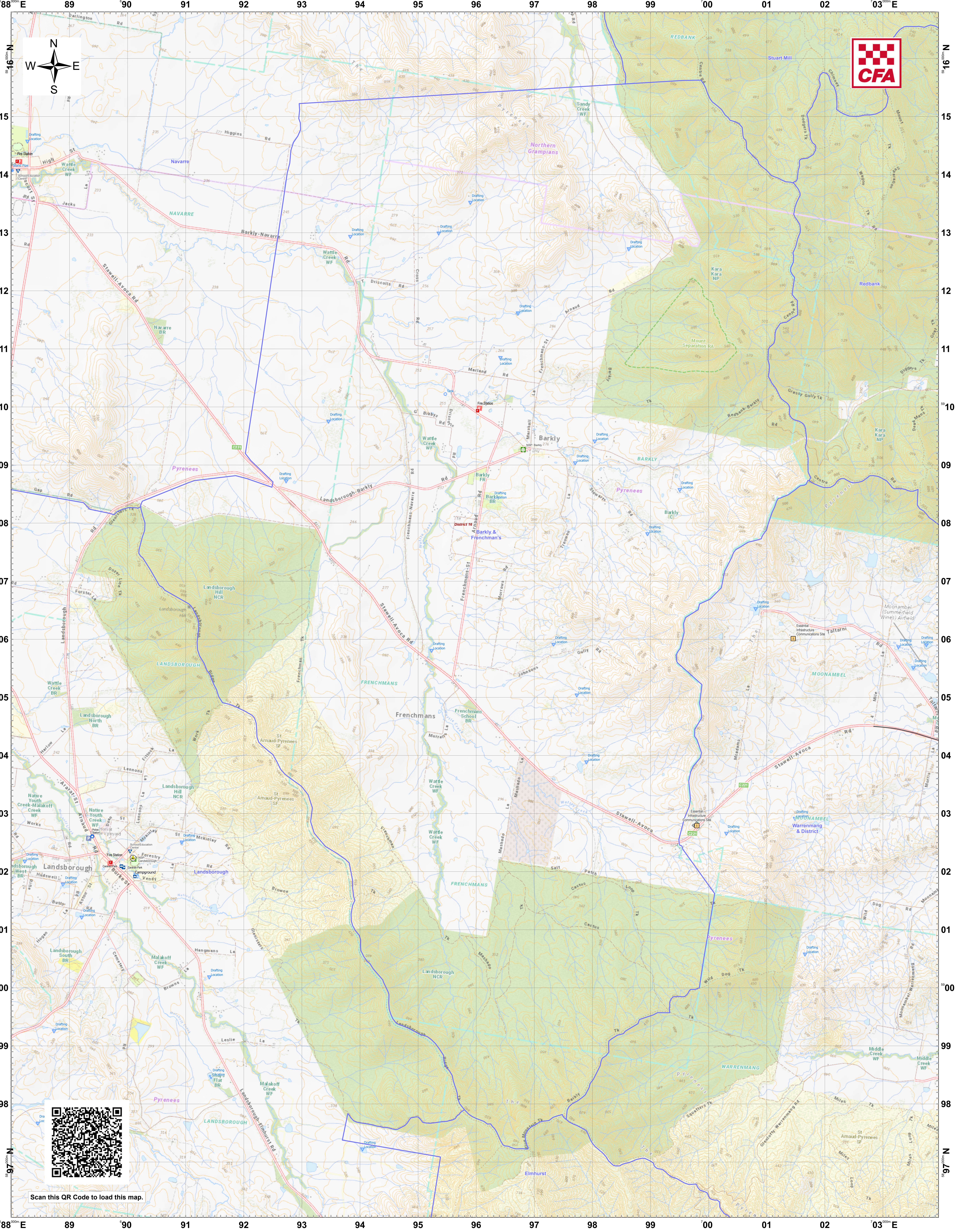
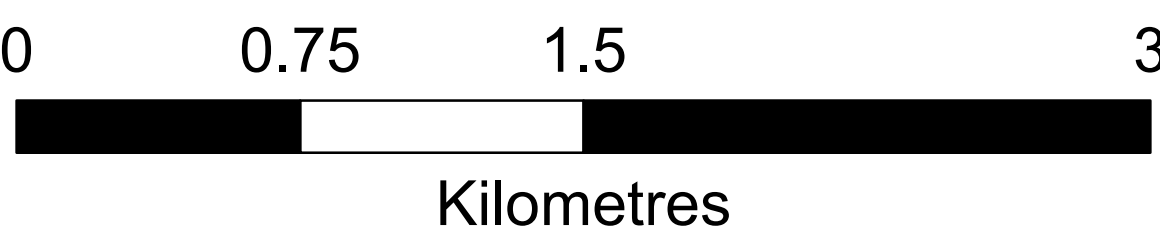


LRD Map: Barkly & Frenchman's Brigade in District 16 Fire Season 2024-2025



Legend

<strong>LRD Locations</strong>		Medical Centres	Essential - Infrastructure	Drafting Point	<strong>LRD Lines</strong>	<strong>LRD Areas</strong>	CFA Brigade Boundaries
Operational Point	Proposed TMP	Essential - Community	Essential - Environment	Hydrant	Proposed Control Line	Operational High Risk Environment	FRV Maintenance Area
Community Alert System	Proposed Staging Area	Local Knowledge		Tank	Principal Roads	Anchor Point/Safety Zone	CFA District Footprints
Relief Centres	Helicopter Landing Area			Stand Pipe	Secondary Roads	Proposed Sector	
Recovery Centre							



Disclaimer:  
This map is a snapshot generated from Victorian Government data as well as data from various other sources. This does not guarantee that the publication is without flaw of any kind or is wholly appropriate for your particular purposes and therefore disclaims all liability for error, loss or damage which may arise from reliance upon it. All persons accessing this information should make appropriate enquiries to assess the currency of the data.

Coordinate System: WGS 1984 UTM Zone 54S

Date Created: 26 Nov 2024