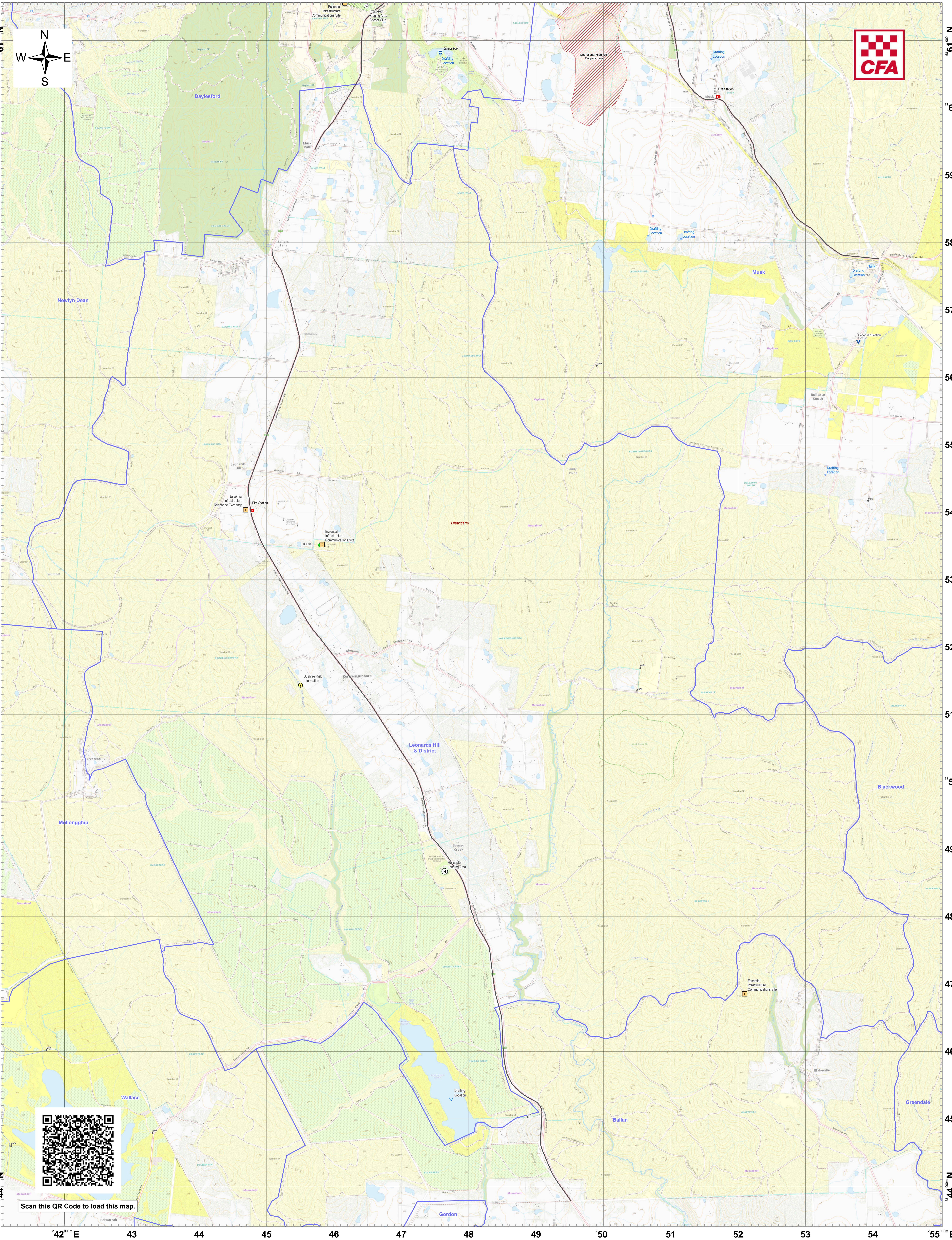


LRD Map: Leonards Hill & District Brigade in District 15 Fire Season 2024-2025



Legend

LRD Locations




- Operational Point
- Community Alert System
- Relief Centres
- Recovery Centre




- Medical Centres
- Proposed TMP
- Proposed Staging
- Helicopter Landing

- Essential - Infrastr
- Essential - Comm
- Essential - Enviro
- Local Knowledge

- Drafting Point
Hydrant
Tank
Stand Pipe

- LRD Lines**
- Proposed Control
 - Principal Roads
 - Secondary Roads

- LRD Areas**
-  Operational High Risk Environment
 -  Anchor Point/Safety Zone
 -  Proposed Sector

-  CFA Brigade Boundaries
 FRV Maintenance Area
 CFA District Footprints

Disclaimer:
This map is a snapshot generated from Victorian Government data as well as data from various other sources. This does not guarantee that the publication is without flaw of any kind or is wholly appropriate for your particular purposes and therefore disclaims all liability for error, loss or damage which may arise from reliance upon it. All persons accessing this information should make appropriate enquiries to assess the currency of the data.

Coordinate System: WGS 1984 UTM Zone 55S
Date Created: 26 Nov 2024