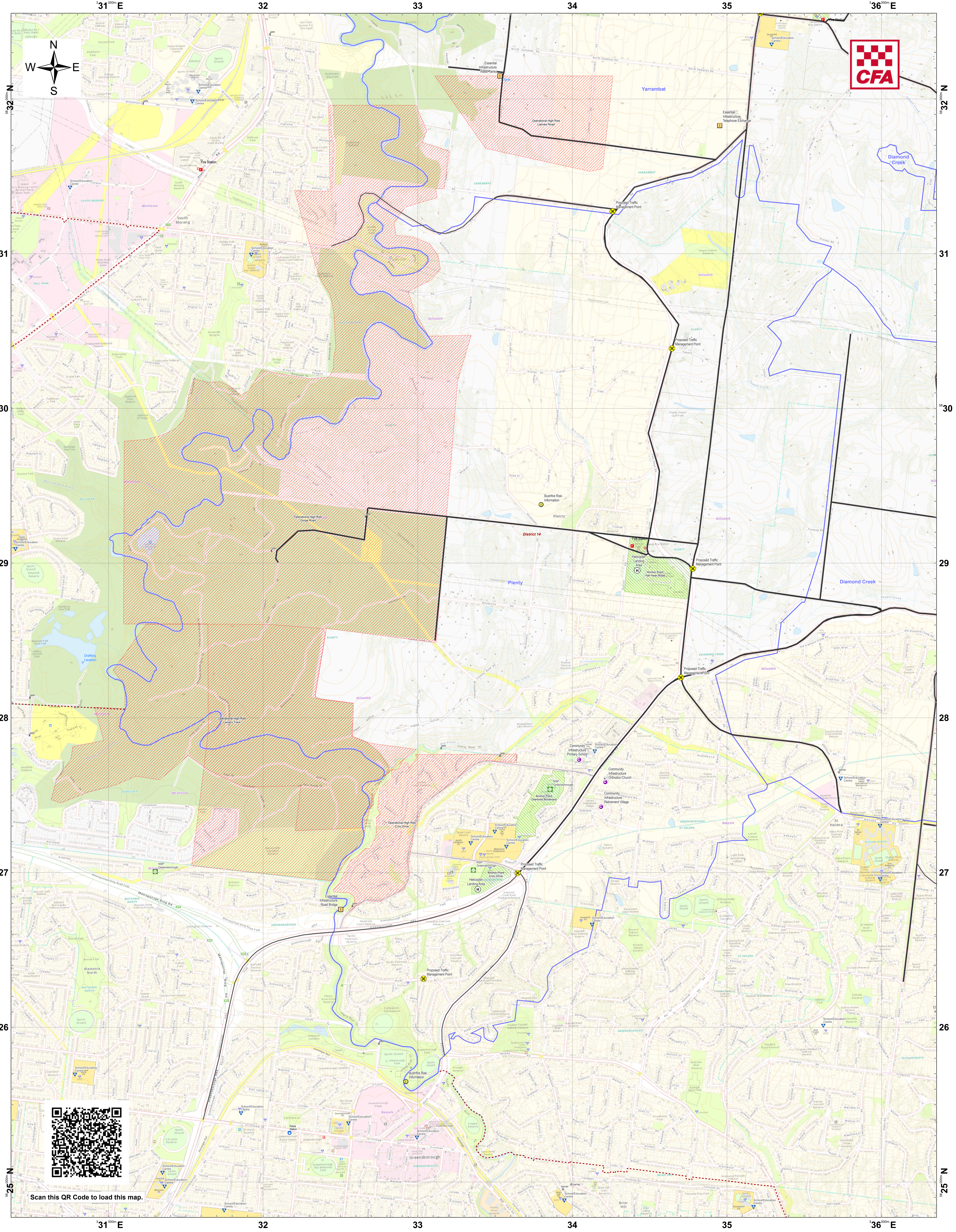
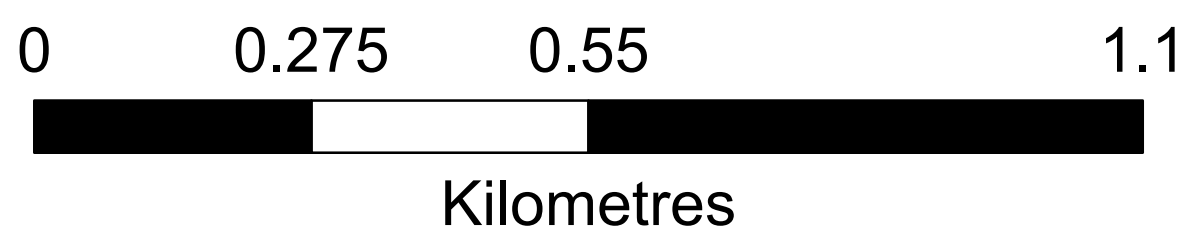


LRD Map: Plenty Brigade in District 14 Fire Season 2024-2025



Legend

|                        |                         |                            |                |                       |                                   |                         |
|------------------------|-------------------------|----------------------------|----------------|-----------------------|-----------------------------------|-------------------------|
| <b>LRD Locations</b>   | Medical Centres         | Essential - Infrastructure | Drafting Point | <b>LRD Lines</b>      | LRD Areas                         | CFA Brigade Boundaries  |
| Operational Point      | Proposed TMP            | Essential - Community      | Hydrant        | Proposed Control Line | Operational High Risk Environment | FRV Maintenance Area    |
| Community Alert System | Proposed Staging Area   | Essential - Environment    | Tank           | Principal Roads       | Anchor Point/Safety Zone          | CFA District Footprints |
| Relief Centres         | Helicopter Landing Area | Local Knowledge            | Stand Pipe     | Secondary Roads       | Proposed Sector                   |                         |
| Recovery Centre        |                         |                            |                |                       |                                   |                         |



Disclaimer:  
This map is a snapshot generated from Victorian Government data as well as data from various other sources. This does not guarantee that the publication is without flaw of any kind or is wholly appropriate for your particular purposes and therefore disclaims all liability for error, loss or damage which may arise from reliance upon it. All persons accessing this information should make appropriate enquiries to assess the currency of the data.

Coordinate System: WGS 1984 UTM Zone 55S

Date Created: 26 Nov 2024