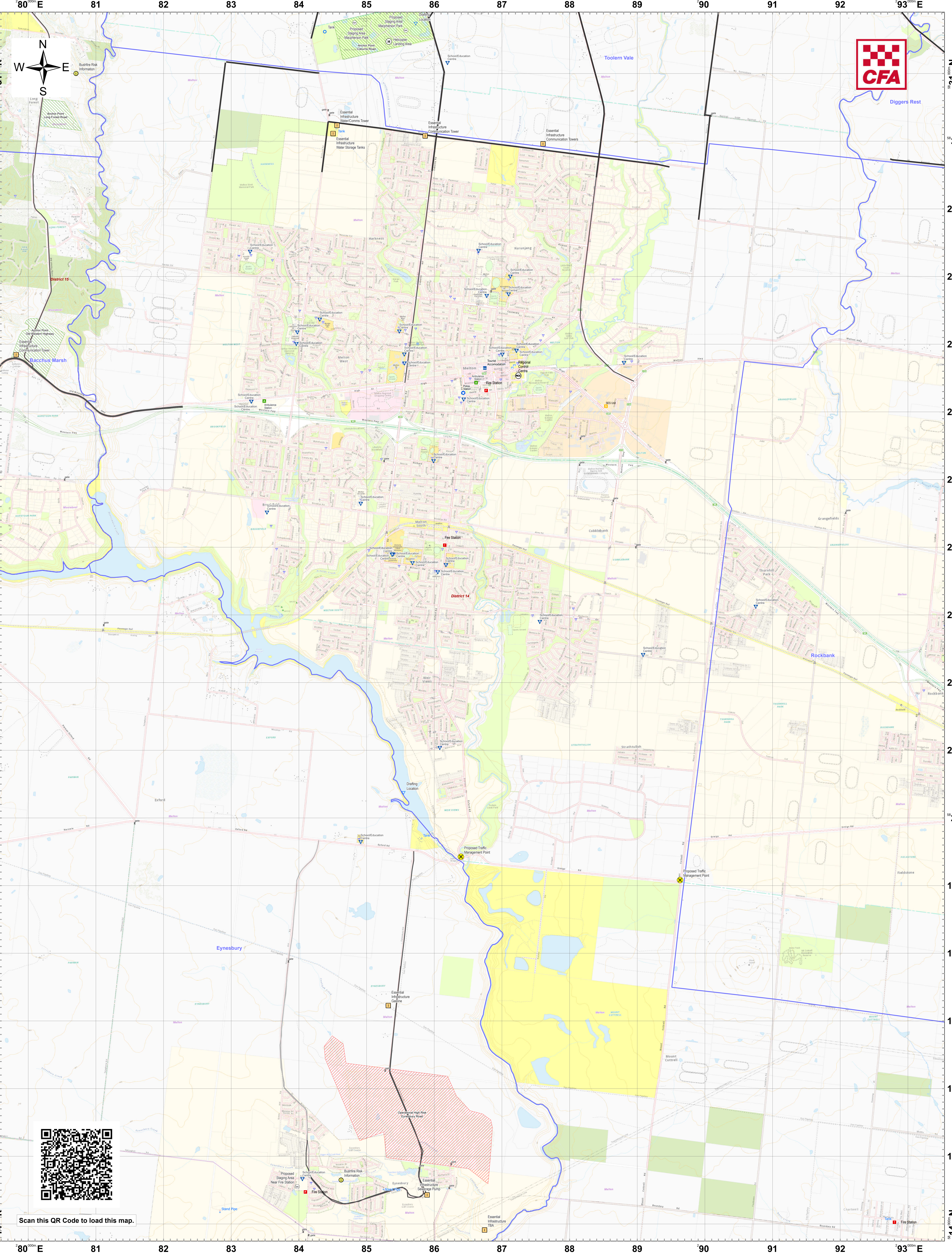


LRD Map: FS56 Melton Brigade in District 14 Fire Season 2024-2025



**Legend**

**LRD Locations**

- Operational Point
- Community Alert System
- Relief Centres
- Recovery Centre
- Medical Centres
- Proposed TMP
- Proposed Staging Area
- Helicopter Landing Area
- Local Knowledge
- Essential - Infrastructure
- Essential - Community
- Essential - Environment
- Drafting Point
- Hydrant
- Tank
- Stand Pipe
- Proposed Control Line
- Principal Roads
- Secondary Roads

**LRD Areas**

- Operational High Risk Environment
- Anchor Point/Safety Zone
- Proposed Sector

**LRD Lines**

- Proposed Control Line
- Principal Roads
- Secondary Roads

**CFA Brigade Boundaries**

- FRV Maintenance Area
- CFA District Footprints

0 0.5 1 2  
Kilometres

Disclaimer:  
This map is a snapshot generated from Victorian Government data as well as data from various other sources. This does not guarantee that the publication is without flaw of any kind or is wholly appropriate for your particular purposes and therefore disclaims all liability for error, loss or damage which may arise from reliance upon it. All persons accessing this information should make appropriate enquiries to assess the currency of the data.

Coordinate System: WGS 1984 UTM Zone 55S  
Date Created: 26 Nov 2024