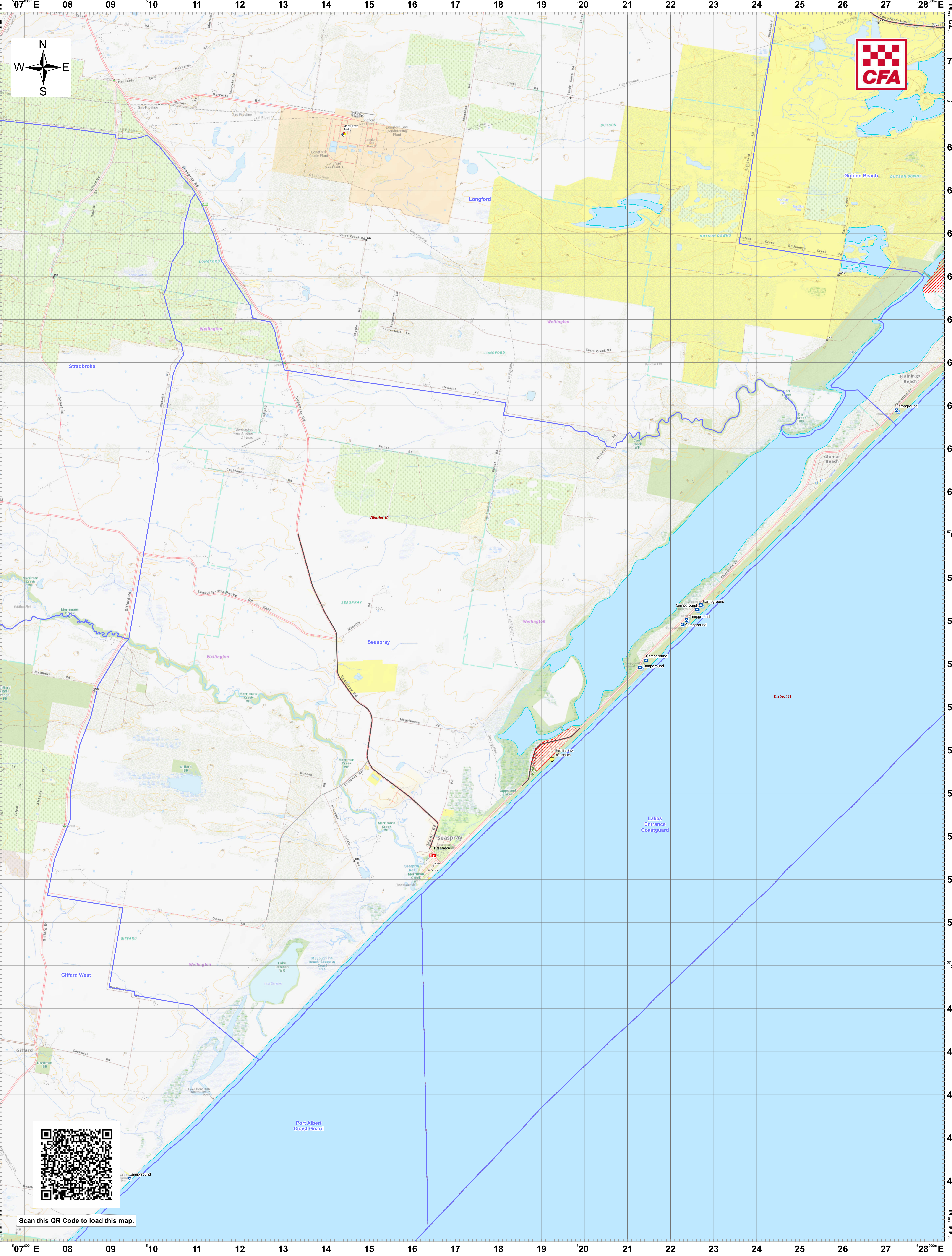


LRD Map: Seaspray Brigade in District 10 Fire Season 2024-2025



Legend

LRD Locations

Operational Point

Community Alert System

Relief Centres

Recovery Centre

Medical Centres

Proposed TMP

Proposed Staging Area

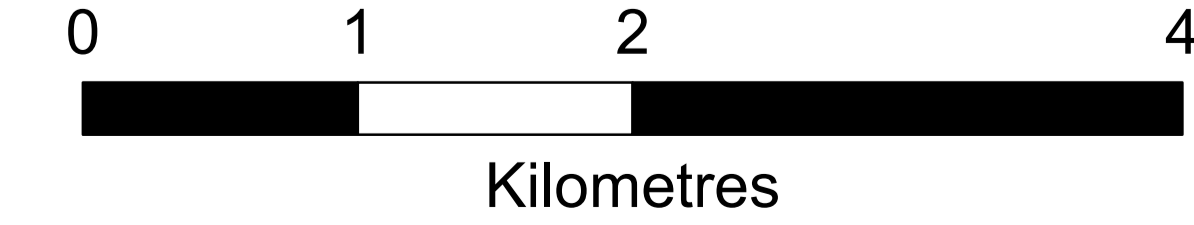
Helicopter Landing Area

Essential - Infrastructure

Essential - Community

Essential - Environment

Local Knowledge

Drafting PointHydrantTankStand PipeProposed Control LinePrincipal RoadsSecondary RoadsLRD LinesOperational High Risk EnvironmentAnchor Point/Safety ZoneProposed SectorCFA Brigade BoundariesFRV Maintenance AreaCFA District Footprints

Disclaimer:
This map is a snapshot generated from Victorian Government data as well as data from various other sources. This does not guarantee that the publication is without flaw of any kind or is wholly appropriate for your particular purposes and therefore disclaims all liability for error, loss or damage which may arise from reliance upon it. All persons accessing this information should make appropriate enquiries to assess the currency of the data.

Coordinate System: WGS 1984 UTM Zone 55S

Date Created: 26 Nov 2024