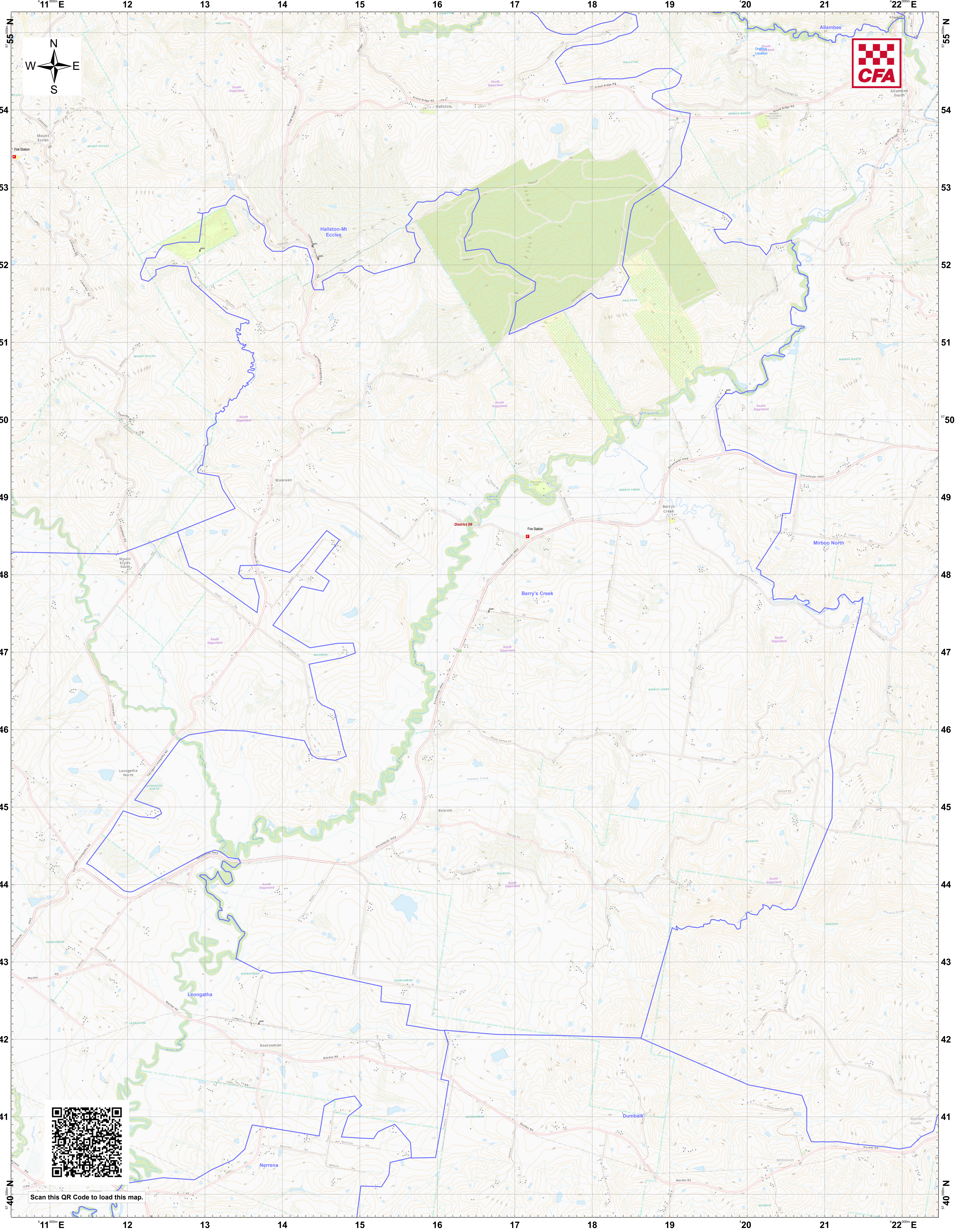
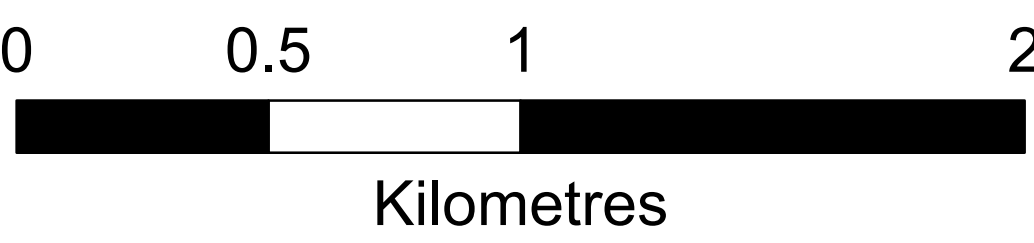


LRD Map: Berry's Creek Brigade in District 09 Fire Season 2024-2025



Legend

LRD Locations		LRD Lines		LRD Areas	
	Operational Point		Proposed Control Line		Operational High Risk Environment
	Community Alert System		Principal Roads		Anchor Point/Safety Zone
	Relief Centres		Secondary Roads		Proposed Sector
	Recovery Centre				
	Medical Centres		Drafting Point		CFA Brigade Boundaries
	Proposed TMP		Hydrant		FRV Maintenance Area
	Proposed Staging Area		Tank		CFA District Footprints
	Helicopter Landing Area		Stand Pipe		
	Essential - Infrastructure				
	Essential - Community				
	Essential - Environment				
	Local Knowledge				



Disclaimer:
This map is a snapshot generated from Victorian Government data as well as data from various other sources. This does not guarantee that the publication is without flaw of any kind or is wholly appropriate for your particular purposes and therefore disclaims all liability for error, loss or damage which may arise from reliance upon it. All persons accessing this information should make appropriate enquiries to assess the currency of the data.

Coordinate System: WGS 1984 UTM Zone 55S

Date Created: 26 Nov 2024