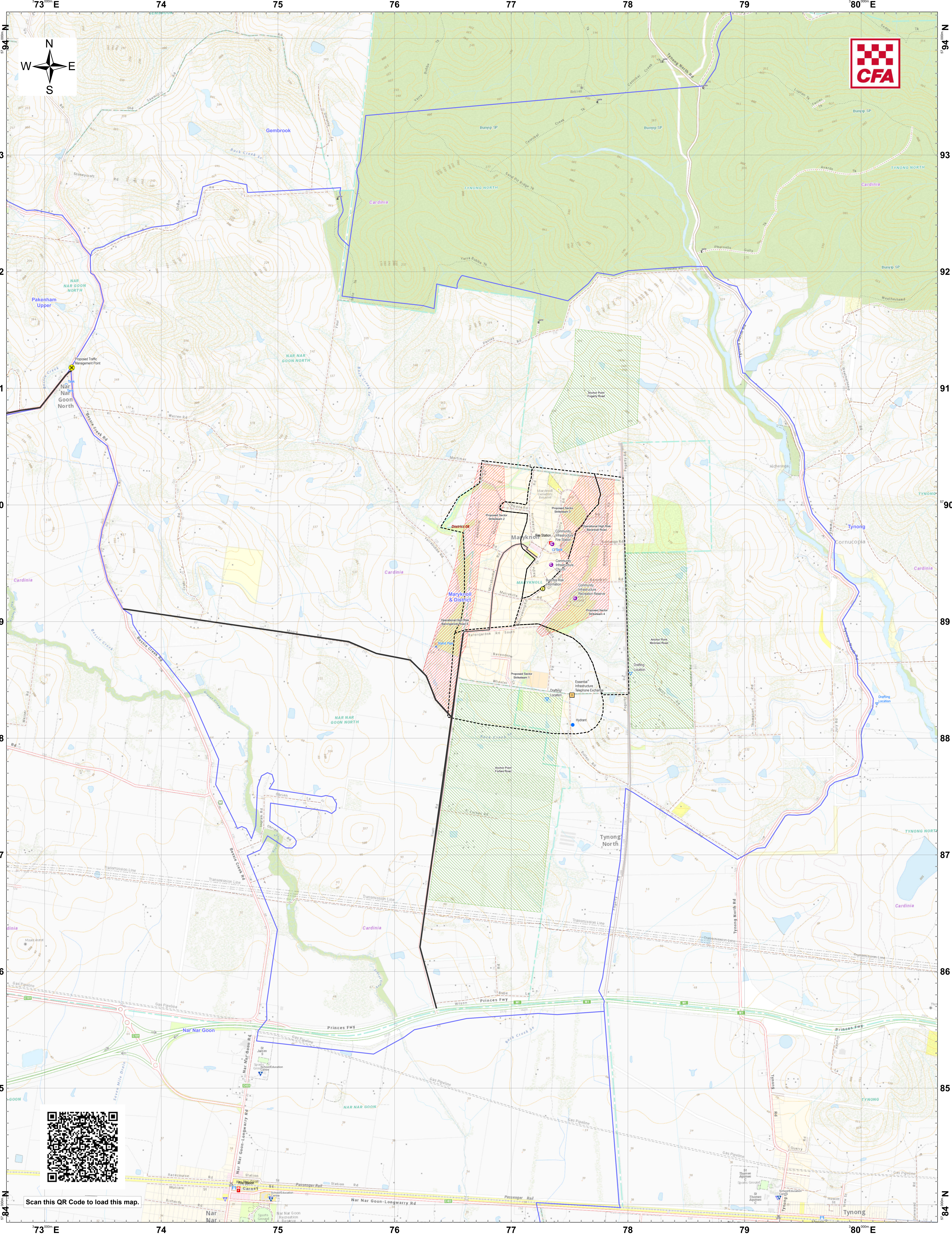
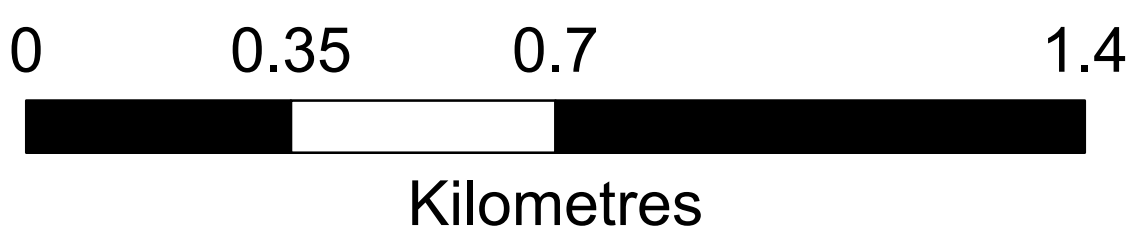


LRD Map: Maryknoll & District Brigade in District 08 Fire Season 2024-2025



Legend

LRD Locations		Medical Centres	Essential - Infrastructure	Drafting Point	LRD Lines		LRD Areas	CFA Brigade Boundaries
Operational Point	Proposed TMP	Essential - Community	Essential - Environment	Hydrant	Proposed Control Line	Operational High Risk Environment	Anchor Point/Safety Zone	FRV Maintenance Area
Community Alert System	Proposed Staging Area	Local Knowledge		Tank	Principal Roads	Proposed Sector		CFA District Footprints
Relief Centres	Helicopter Landing Area			Stand Pipe	Secondary Roads			
Recovery Centre								



Disclaimer:
This map is a snapshot generated from Victorian Government data as well as data from various other sources. This does not guarantee that the publication is without flaw of any kind or is wholly appropriate for your particular purposes and therefore disclaims all liability for error, loss or damage which may arise from reliance upon it. All persons accessing this information should make appropriate enquiries to assess the currency of the data.

Coordinate System: WGS 1984 UTM Zone 55S

Date Created: 26 Nov 2024