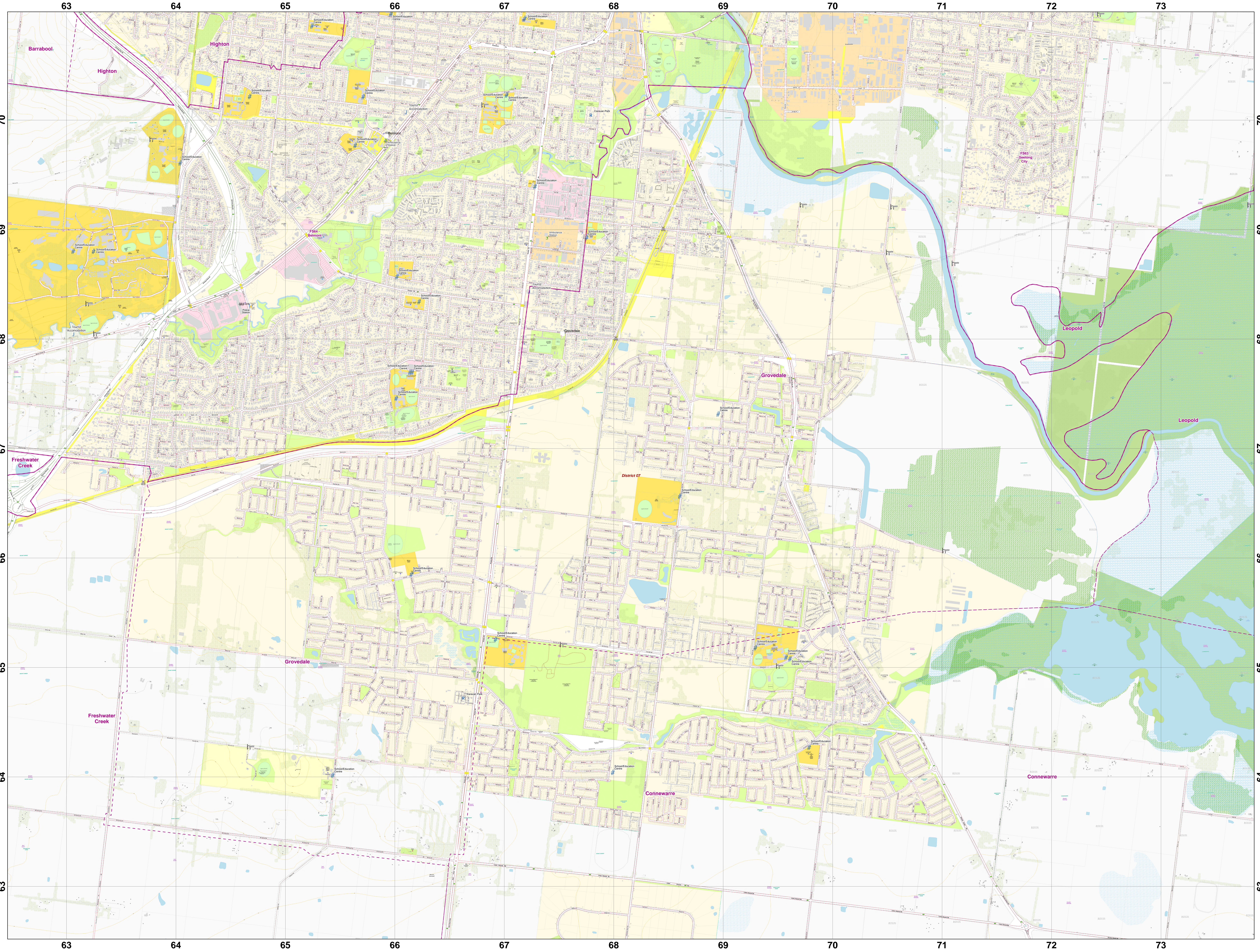


# Local Response Data: Grovedale Brigade in District D07 - May 2026



Scan this QR Code from a mobile device to load a copy of this map.



- On this map:
- # School/Education Centre
  - R Caravan Park
  - J Tourist Accommodation
  - h Gate
  - SES Unit
  - Ambulance Station
  - Police Station
  - FRV Maintenance Area
  - CFA Brigade Boundaries
  - CFA District
  - CFA Fire Station
    - Main
    - Satellite

Scan this QR Code to access more LRD Maps. Download to your device and import them into your mapping application.



**Disclaimer:**  
This map is a snapshot generated from Victorian Government data as well as data from various other sources. This does not guarantee that the publication is without flaw of any kind or is wholly appropriate for your particular purposes and therefore disclaims all liability for error, loss or damage which may arise from reliance upon it. All persons accessing this information should make appropriate enquiries to assess the currency of the data.



1:11,000  
Coordinate System: GDA2020 MGA Zone 55  
Date Created: 25 May 2026