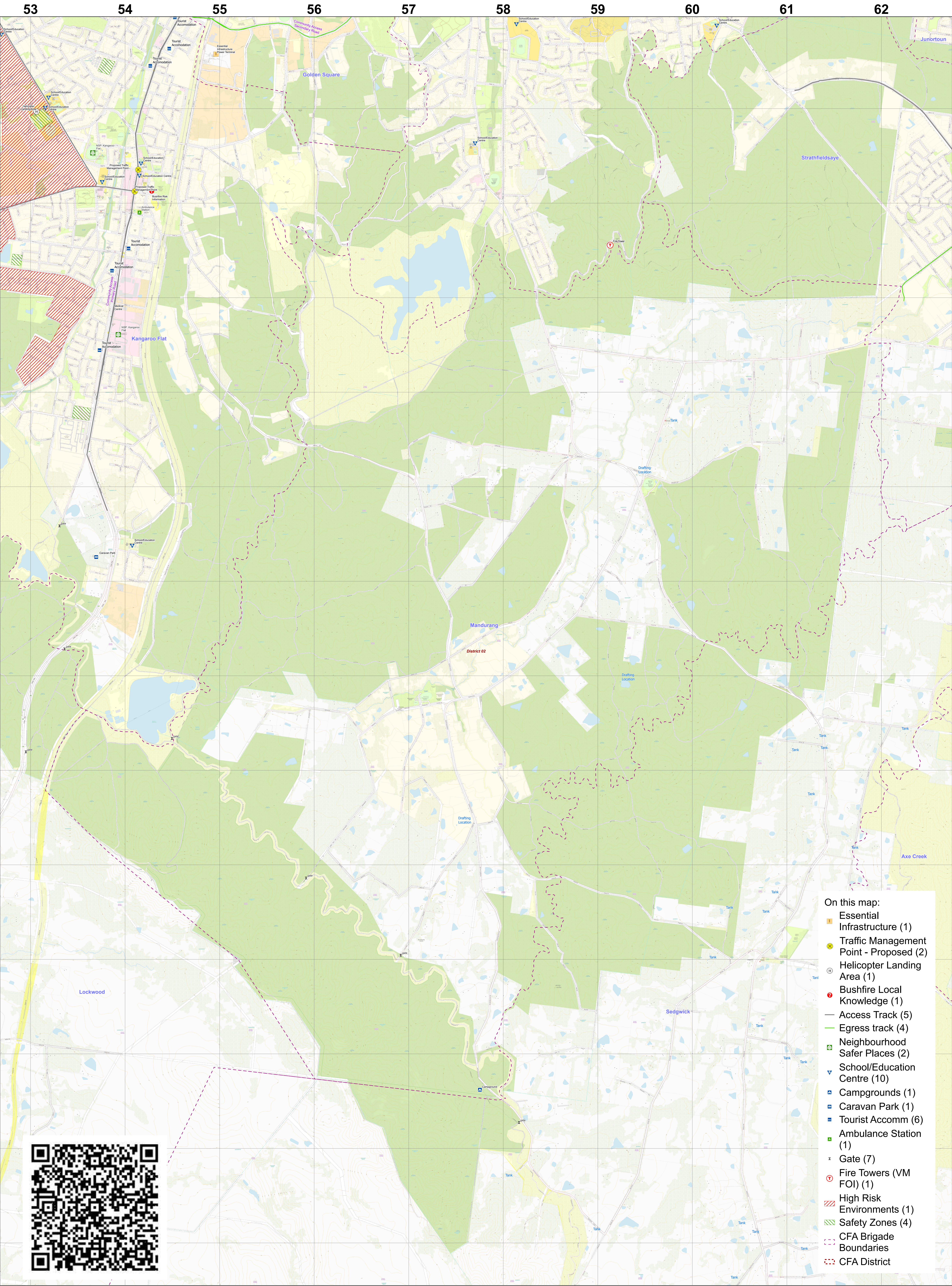


LRD Map: Mandurang Brigade in District 02

Fire Season 2025-2026

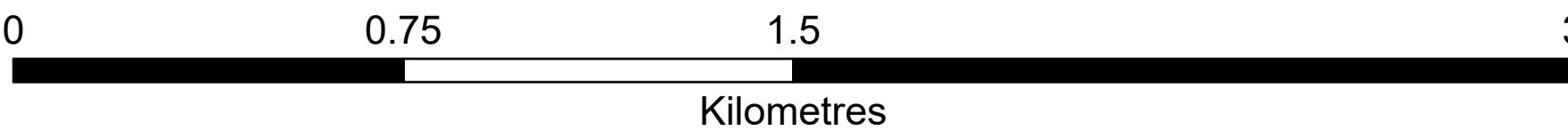


- On this map:
- Essential Infrastructure (1)
  - Traffic Management Point - Proposed (2)
  - Helicopter Landing Area (1)
  - Bushfire Local Knowledge (1)
  - Access Track (5)
  - Egress track (4)
  - Neighbourhood Safer Places (2)
  - School/Education Centre (10)
  - Campgrounds (1)
  - Caravan Park (1)
  - Tourist Accommm (6)
  - Ambulance Station (1)
  - Gate (7)
  - Fire Towers (VM FOI) (1)
  - High Risk Environments (1)
  - Safety Zones (4)
  - CFA Brigade Boundaries
  - CFA District

Scan this QR Code from a mobile device to load this map.

Date Created: 8 Nov 2025

Disclaimer:  
This map is a snapshot generated from Victorian Government data as well as data from various other sources. This does not guarantee that the publication is without flaw of any kind or is wholly appropriate for your particular purposes and therefore disclaims all liability for error, loss or damage which may arise from reliance upon it. All persons accessing this information should make appropriate enquiries to assess the currency of the data.



Coordinate System: GDA2020 MGA Zone 55