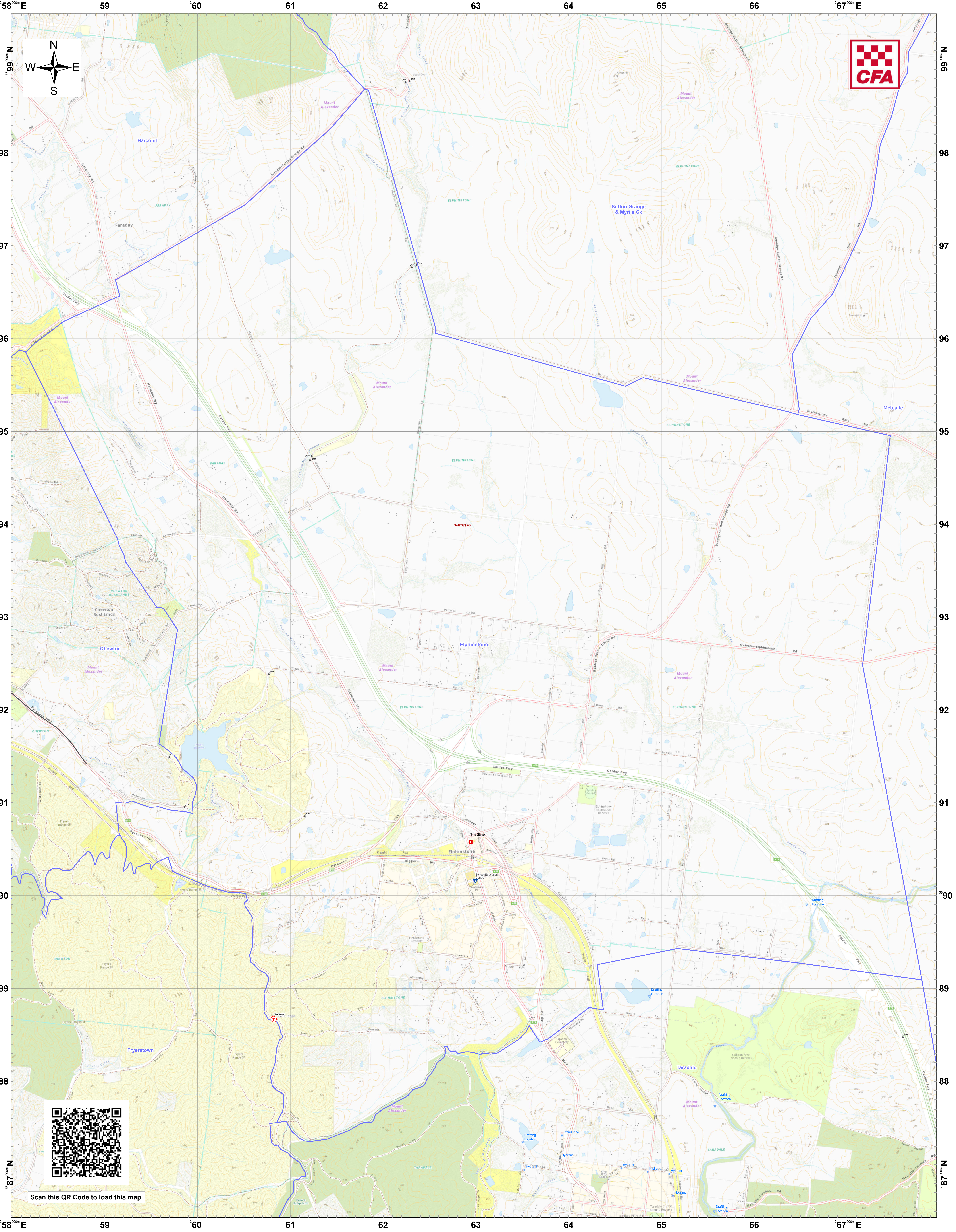


LRD Map: Elphinstone Brigade in District 02 Fire Season 2024-2025



Legend

LRD Locations

Operational Point

Community Alert System

Relief Centres

Recovery Centre

Medical Centres

Proposed TMP

Proposed Staging Area

Helicopter Landing Area

Essential - Infrastructure

Essential - Community

Essential - Environment

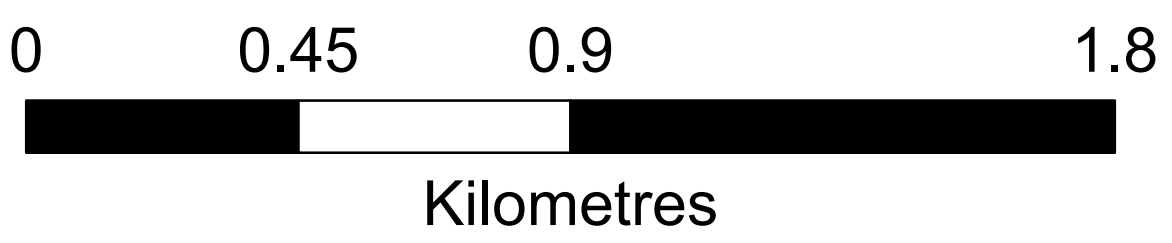
Local Knowledge

Drafting Point

Hydrant

Tank

Stand Pipe

Proposed Control LinePrincipal RoadsSecondary RoadsLRD LinesLRD AreasOperational High Risk EnvironmentAnchor Point/Safety ZoneProposed SectorCFA Brigade BoundariesFRV Maintenance AreaCFA District Footprints

Disclaimer:
This map is a snapshot generated from Victorian Government data as well as data from various other sources. This does not guarantee that the publication is without flaw of any kind or is wholly appropriate for your particular purposes and therefore disclaims all liability for error, loss or damage which may arise from reliance upon it. All persons accessing this information should make appropriate enquiries to assess the currency of the data.

Coordinate System: WGS 1984 UTM Zone 55S
Date Created: 26 Nov 2024