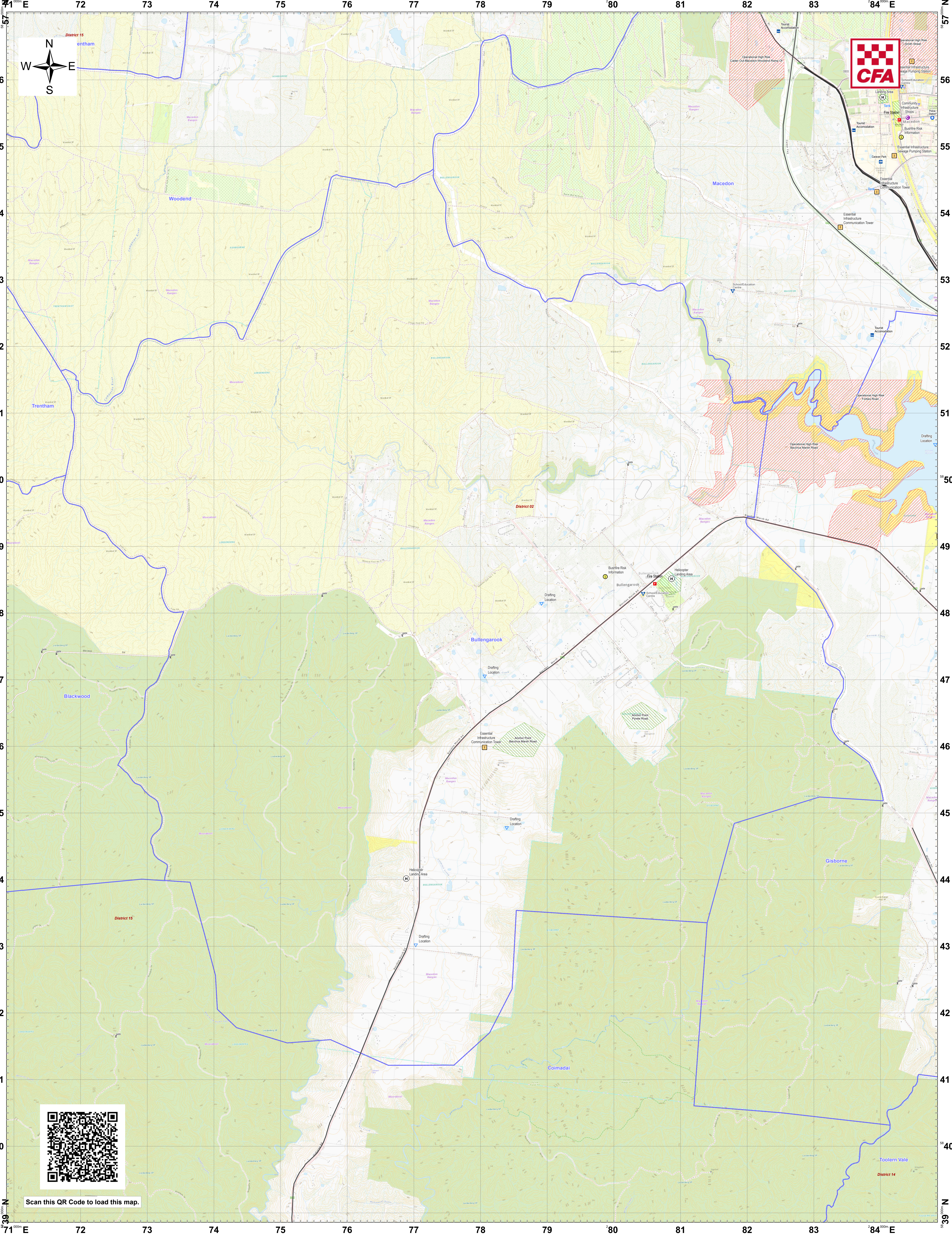
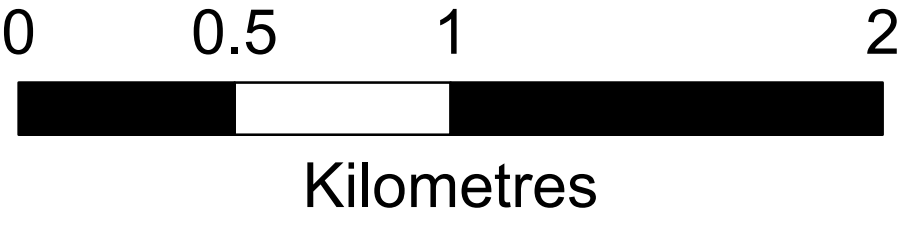


LRD Map: Bullengarook Brigade in District 02 Fire Season 2024-2025



Legend

LRD Locations		LRD Lines		LRD Areas	
Operational Point	Medical Centres	Proposed Control Line	Drafting Point	Operational High Risk Environment	CFA Brigade Boundaries
Community Alert System	Proposed Staging Area	Principal Roads	Hydrant	Anchor Point/Safety Zone	FRV Maintenance Area
Relief Centres	Helicopter Landing Area	Secondary Roads	Tank	Proposed Sector	CFA District Footprints
Recovery Centre	Essential - Infrastructure		Stand Pipe		
	Essential - Community				
	Essential - Environment				
	Local Knowledge				



Disclaimer:  
This map is a snapshot generated from Victorian Government data as well as data from various other sources. This does not guarantee that the publication is without flaw of any kind or is wholly appropriate for your particular purposes and therefore disclaims all liability for error, loss or damage which may arise from reliance upon it. All persons accessing this information should make appropriate enquiries to assess the currency of the data.

Coordinate System: WGS 1984 UTM Zone 55S  
Date Created: 26 Nov 2024