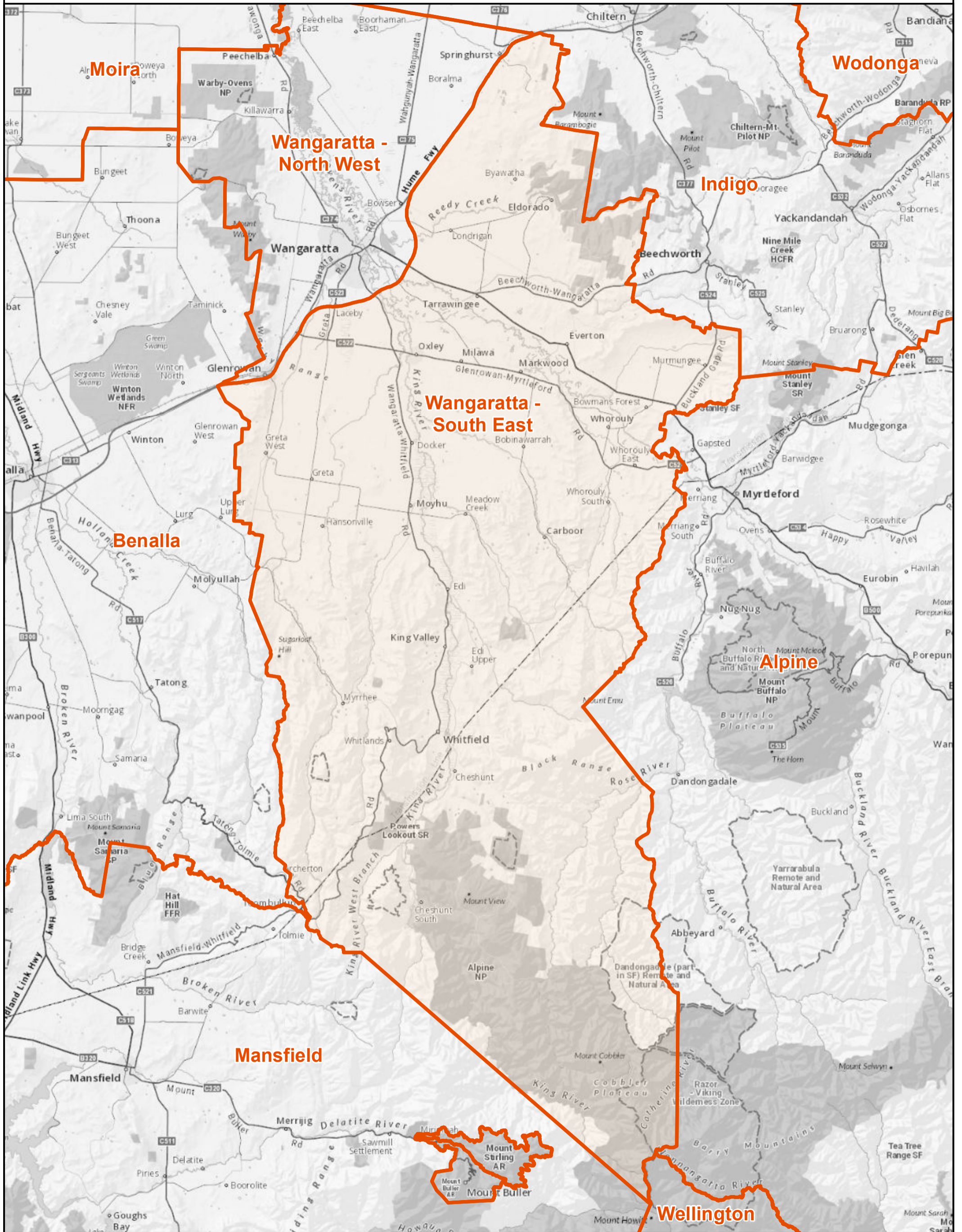



Fire Danger Period Areas - Wangaratta - South East



0 5 10 20 30 40 Kilometers



Legend

 Fire Danger Period Areas

Explanation: Some municipalities (shire or council) are split into smaller areas for Fire Danger Period Declarations. This map helps understand where these splits are.

Disclaimer: This map is a snapshot generated from Victorian Government data as well as data from various other sources. This does not guarantee that the publication is without flaw of any kind or is wholly appropriate for your particular purposes and therefore disclaims all liability for error, loss or damage which may arise from reliance upon it. All persons accessing this information should make appropriate enquiries to assess the currency of the data.

Job ID: 20171005000
Date Prepared: 5th October 2017