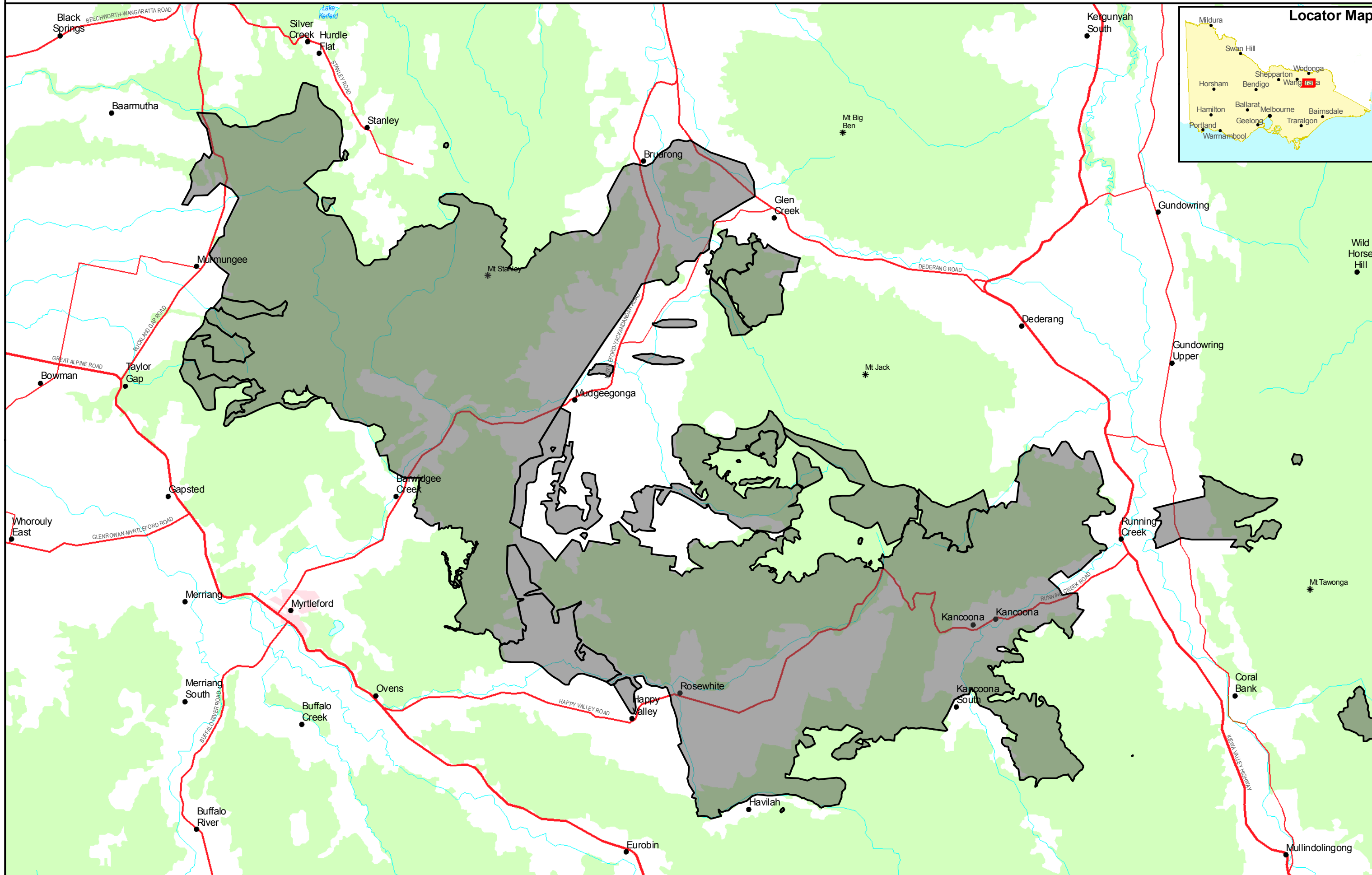


Interim Final Fire Perimeter - Murrungee Fire (2008/2009 Fire Season)



This map displays the interim final fire perimeter extracted from DSE's FireMap on 24/4/2009. Fire perimeter information can be captured from a variety of sources including post fire aerial photography, satellite imagery, linescan, ground observations and aerial observations. As current investigations continue perimeter information will change and improve.

Disclaimer: This map is a snapshot generated from Victorian Government data as well as data from various other sources. This does not guarantee that the publication is without flaw of any kind or is wholly appropriate for your particular purposes and therefore disclaims all liability for error, loss or damage which may arise from reliance upon it. All persons accessing this information should make appropriate enquiries to assess the currency of the data.

Map Produced: 13th May 2009 Job ID: 2009fires/jobs/standard maps