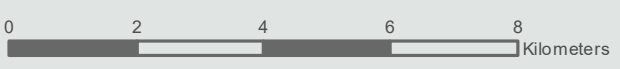
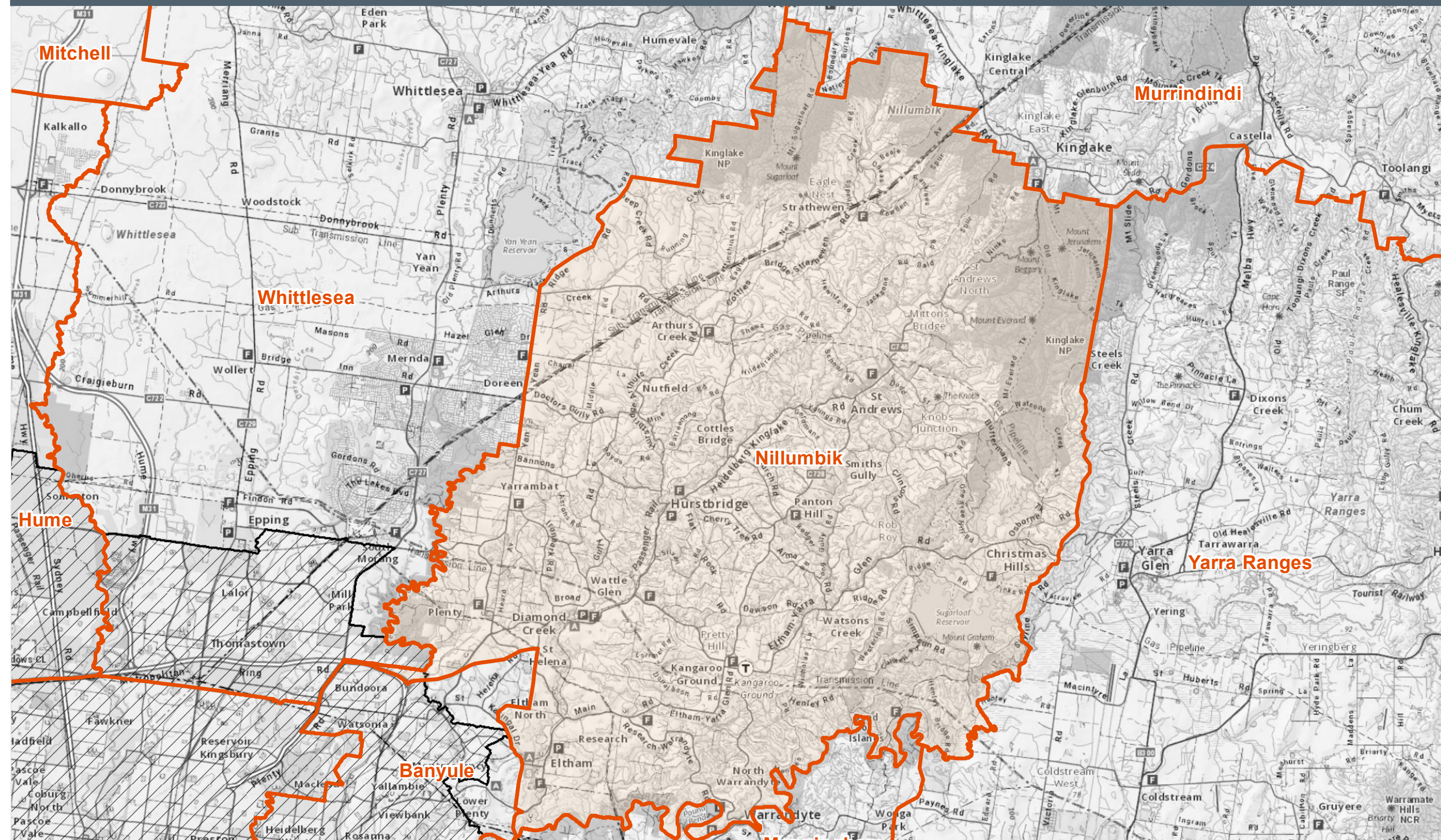


Fire Danger Period Areas - Nillumbik



Disclaimer:
 This map is a snapshot generated from Victorian Government data as well as data from various other sources. This does not guarantee that the publication is without flaw of any kind or is wholly appropriate for your particular purposes and therefore disclaims all liability for error, loss or damage which may arise from reliance upon it. All persons accessing this information should make appropriate enquiries to assess the currency of the data.

Explanation: Some municipalities (shire or council) overlap with the former Metropolitan Fire District (MFD) as at 30 June 2020. Fire Danger Period Restrictions do not apply in the former MFD. This map helps understand where these overlaps are.

Legend

- Fire Danger Period Areas
- Restrictions do not apply (former MFD)

Job ID: 20201013000 / BIP-1357
 Date Prepared: 26/10/2020