

HILLS GARDEN

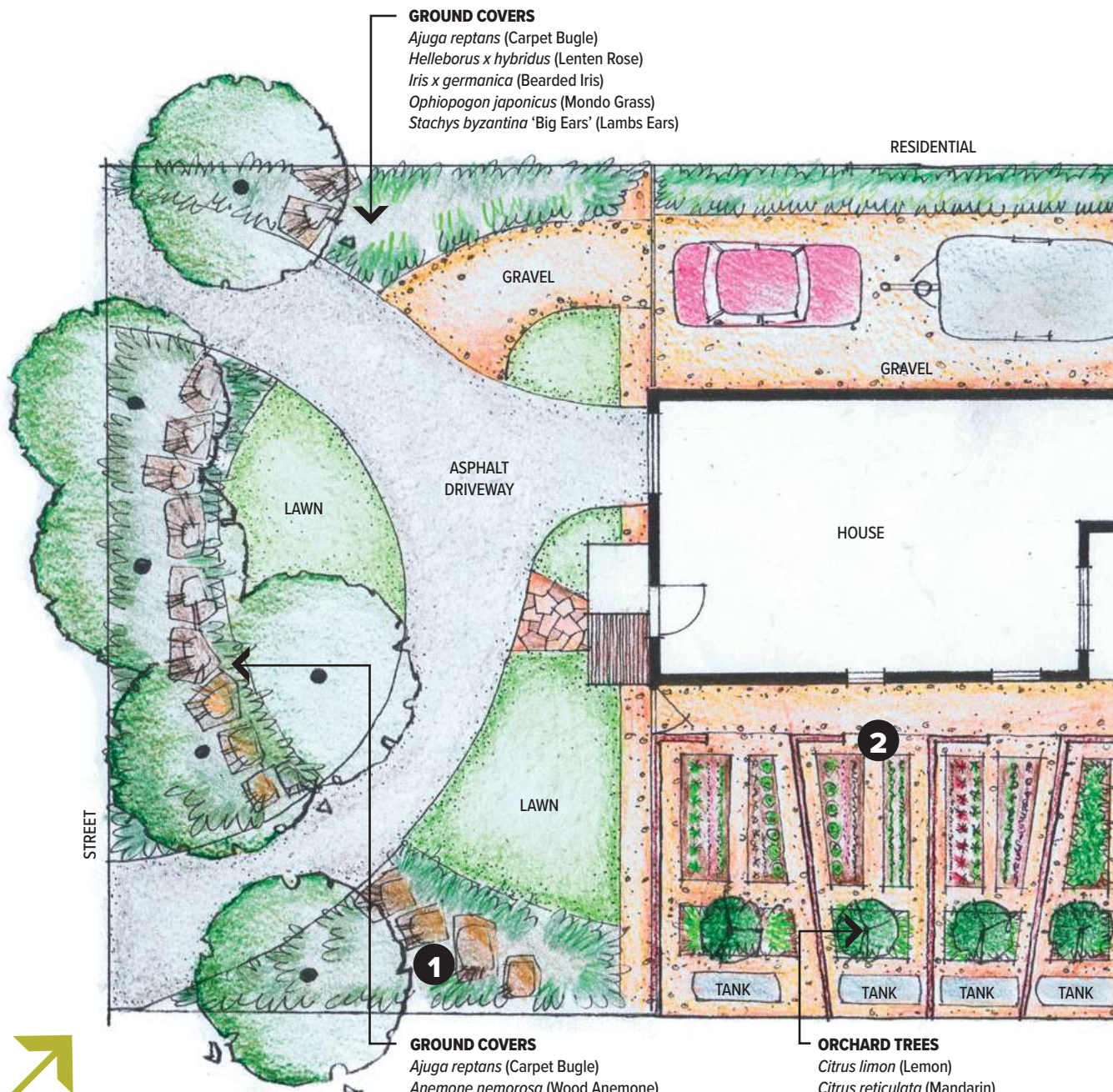
LANDSCAPING FOR BUSHFIRE:
GARDEN DESIGN & PLANT SELECTION



cfa.vic.gov.au

OUR COMMUNITY • OUR CFA





GROUND COVERS

- Ajuga reptans* (Carpet Bugle)
- Helleborus x hybridus* (Lenten Rose)
- Iris x germanica* (Bearded Iris)
- Ophiopogon japonicus* (Mondo Grass)
- Stachys byzantina* 'Big Ears' (Lambs Ears)

GROUND COVERS

- Ajuga reptans* (Carpet Bugle)
- Anemone nemorosa* (Wood Anemone)
- Helleborus x hybridus* (Lenten Rose)
- Iris x germanica* (Bearded Iris)
- Ophiopogon japonicus* (Mondo Grass)
- Liriope Muscari* (Turf Lily)
- Stachys byzantina* 'Big Ears' (Lambs Ears)

ORCHARD TREES

- Citrus limon* (Lemon)
- Citrus reticulata* (Mandarin)
- Prunus salicina* cv. (Japanese Plum)
- Malus domestica* cv. (Apple)

**MOST LIKELY
FIRE DIRECTION**



1

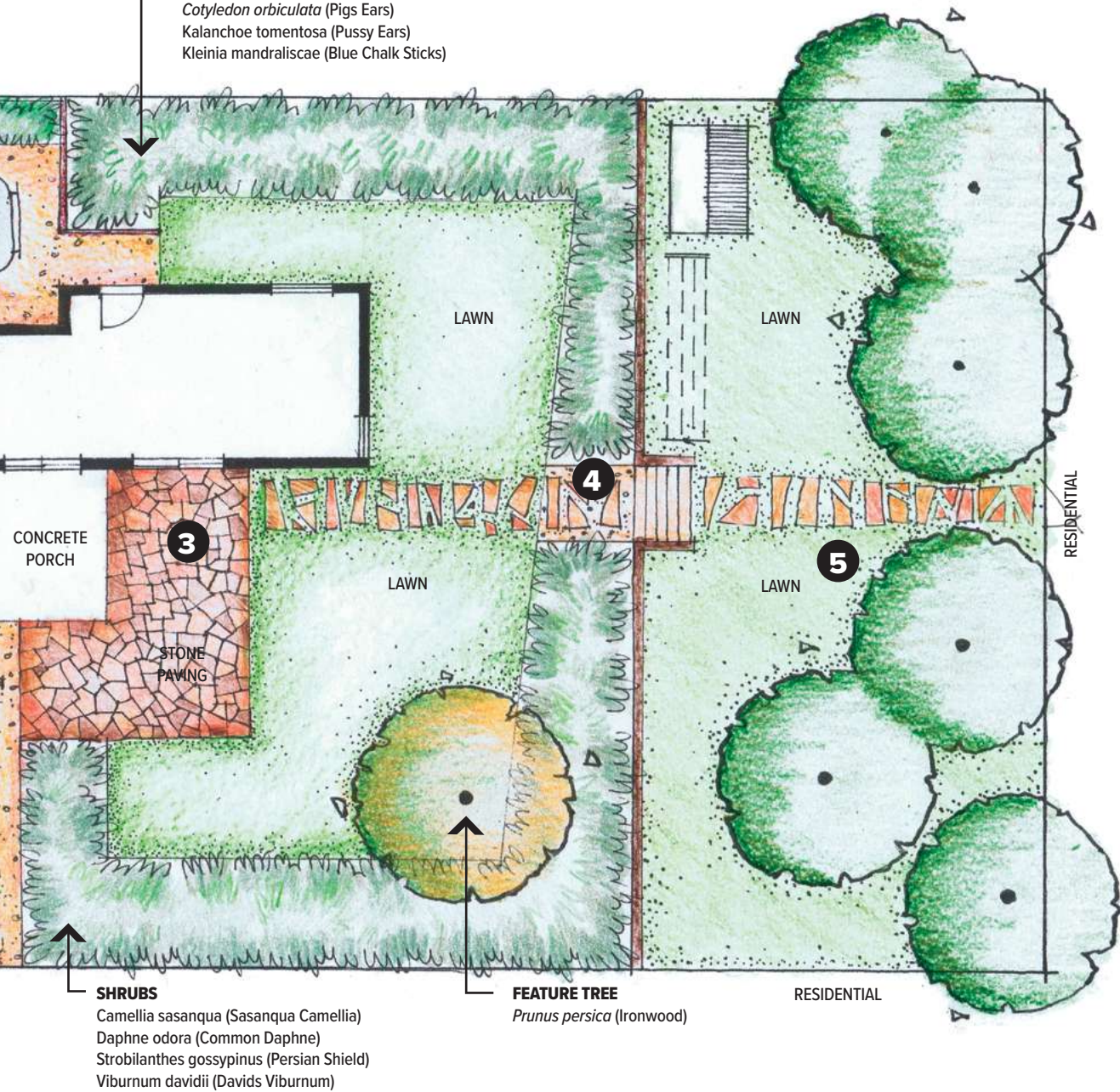
Avoid planting shrubs under trees. Instead use groundcovers with low flammability and low-growing succulents under trees to provide maximum separation between fuel at the ground level and the tree canopy.

2

Keep veggie gardens well watered and avoid loose, dry mulch. If properly maintained they can provide an area of low flammability.

SUCCULENTS

Aeonium arboreum 'Swartzkop'
Aloe x spinosissima (Spider Aloe)
Cotyledon orbiculata (Pigs Ears)
Kalanchoe tomentosa (Pussy Ears)
Kleinia mandraliscae (Blue Chalk Sticks)



SHRUBS

Camellia sasanqua (Sasanqua Camellia)
Daphne odora (Common Daphne)
Strobilanthes gossypinus (Persian Shield)
Viburnum davidii (Davids Viburnum)

FEATURE TREE

Prunus persica (Ironwood)

3

Use paving and gravel around the house to separate plants from windows, doors and other vulnerable parts of the building.

4

Separate garden beds or groups of shrubs using decorative paving, gravel and lawn.

5

Trees must not overhang the roofline. Maintain any remnant indigenous trees in clumps at least 10 metres from the house.

The location and arrangement of vegetation within a garden has a greater impact on how a bushfire will spread than the flammability of individual plants.

Use these four principles when designing your garden to reduce the risk of the garden contributing to house loss in a bushfire.

- **create defensible space**
- **remove flammable objects from around the house**
- **break up fuel continuity**
- **carefully select, locate and maintain trees**

Remember, a holistic approach to bushfire preparation is critical. While garden design and maintenance can improve the chances of a house surviving a bushfire, do not rely on these in isolation. In bushfire risk areas, on **Extreme** and **Catastrophic** days leaving early is always the safest option.

For more detail and to use CFA's online Plant Selection Key visit **cfa.vic.gov.au/plants** or call the VicEmergency Hotline on **1800 226 226**