

# COASTAL GARDEN

LANDSCAPING FOR BUSHFIRE:  
GARDEN DESIGN & PLANT SELECTION

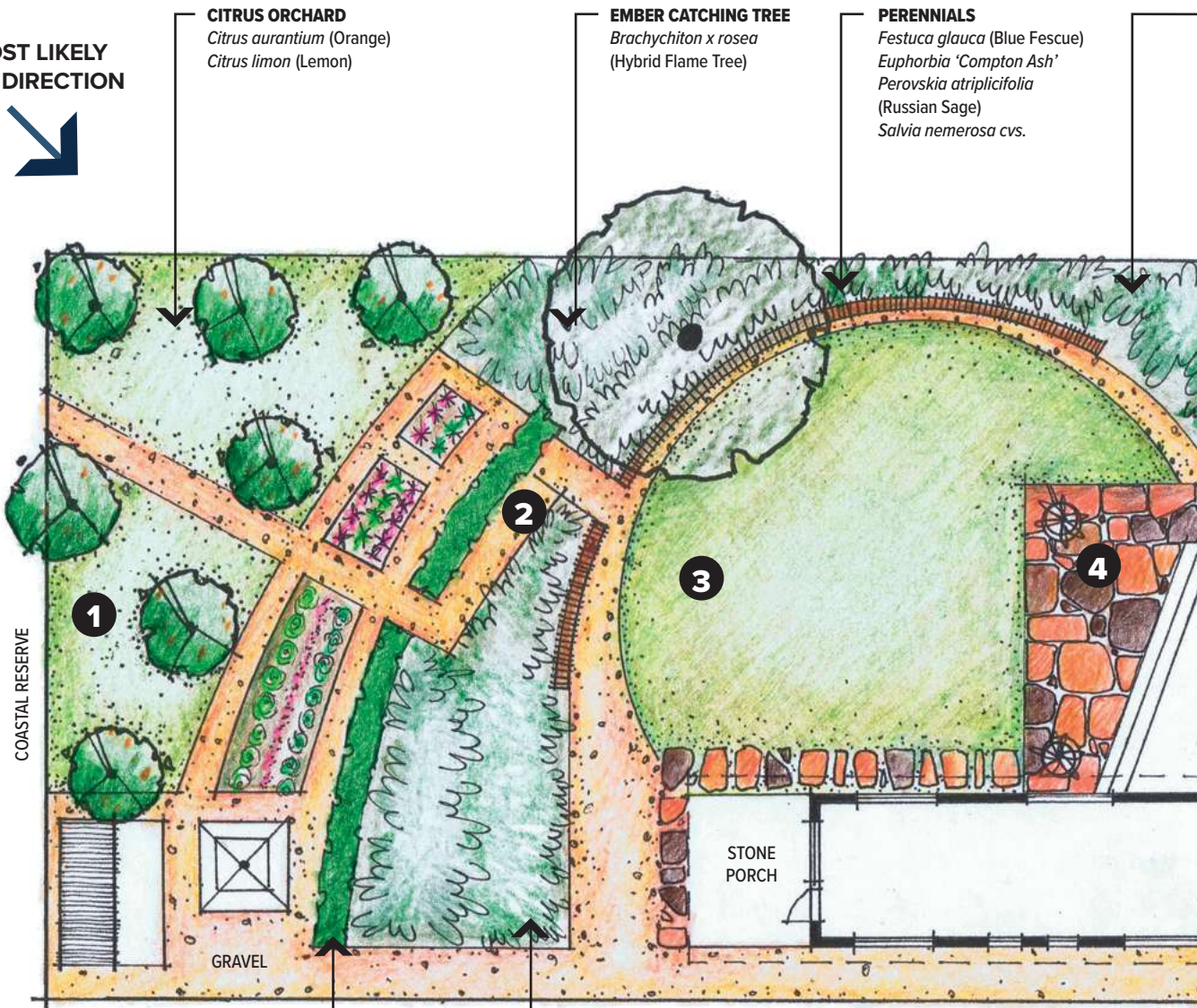


[cfa.vic.gov.au](http://cfa.vic.gov.au)

OUR COMMUNITY • OUR CFA



**MOST LIKELY  
FIRE DIRECTION**



**CITRUS ORCHARD**  
*Citrus aurantium* (Orange)  
*Citrus limon* (Lemon)

**EMBER CATCHING TREE**  
*Brachyhiton x rosea*  
(Hybrid Flame Tree)

**PERENNIALS**  
*Festuca glauca* (Blue Fescue)  
*Euphorbia 'Compton Ash'*  
*Perovskia atriplicifolia*  
(Russian Sage)  
*Salvia nemerosa* cvs.

COASTAL RESERVE

1

2

3

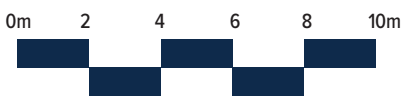
4

GRAVEL

STONE PORCH

**HEDGE**  
*Corynocarpus laevigatus*  
(Karakia)

**PERENNIALS**  
*Kniphofia* cv. (Red Hot Pokers)  
*Phormium* cv. (New Zealand Flax)  
*Salvia microphylla* cvs.  
*Sedum 'Matrona'* (White Correa)

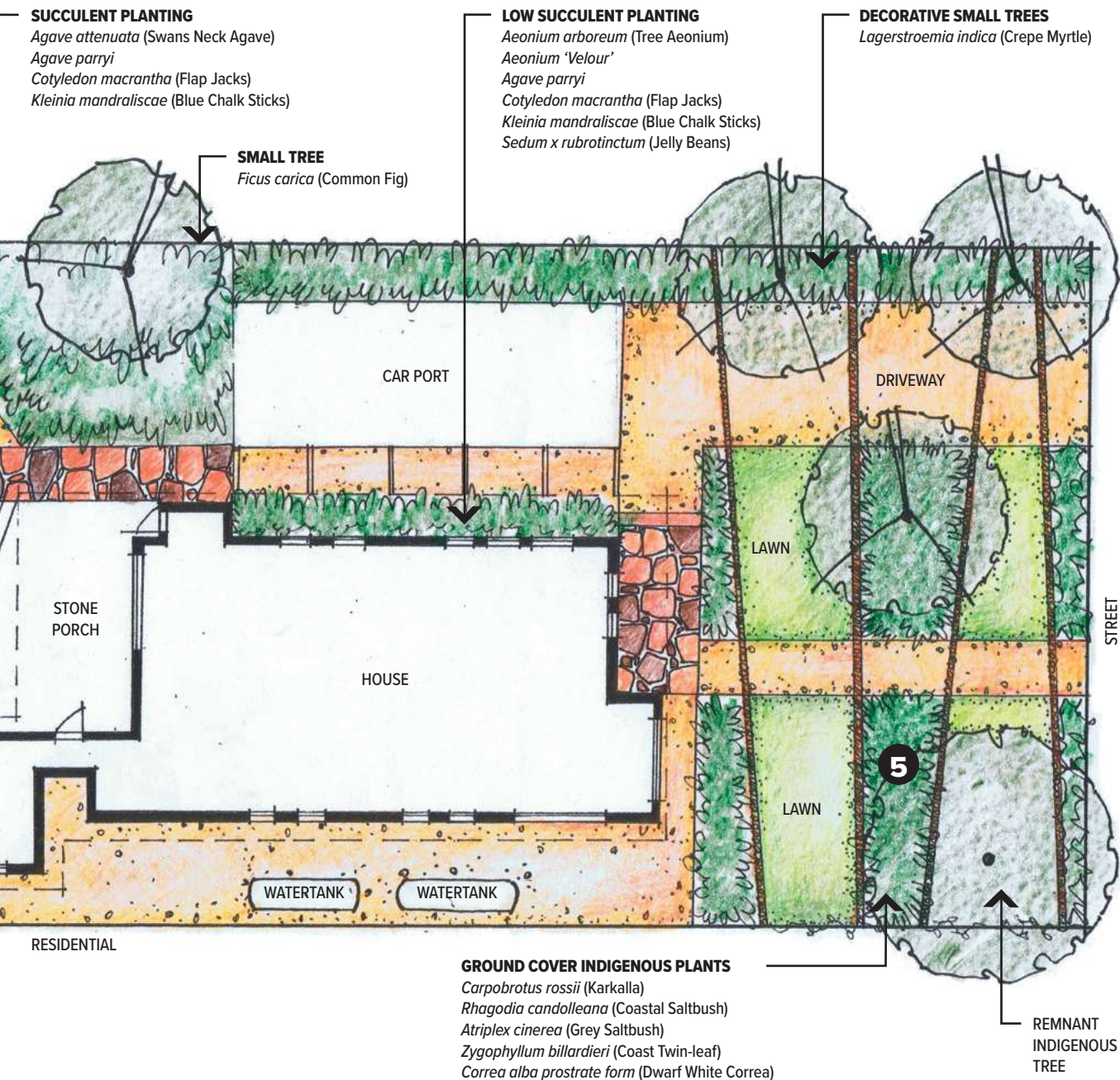


1

Create space between tree canopies to help prevent fire spreading from tree to tree. There should be at least two metres between mature canopies.

2

Use gravel paths and lawn to provide separation between garden beds. This breaks up the continuity of vegetation within the garden to prevent fuel corridors.



3

Locate areas of low fuel such as lawn or a well maintained veggie garden between the house and the most likely direction of a bushfire.

4

Use paving, gravel or stone around the house to keep plants away from windows, doors and other vulnerable parts of the building.

5

Avoid planting shrubs under trees. Instead use groundcovers with low flammability and low-growing succulents under trees to provide maximum separation between fuel at the ground level and the tree canopy.

The location and arrangement of vegetation within a garden has a greater impact on how a bushfire will spread than the flammability of individual plants.

Use these four principles when designing your garden to reduce the risk of the garden contributing to house loss in a bushfire.

- **Create defensible space**
- **Remove flammable objects from around the house**
- **Break up fuel continuity**
- **Carefully select, locate and maintain trees**

Remember, a holistic approach to bushfire preparation is critical. While garden design and maintenance can improve the chances of a house surviving a bushfire, do not rely on these in isolation. In bushfire risk areas, on **Extreme** and **Catastrophic** days leaving early is always the safest option.

For more detail and to use CFA's online Plant Selection Key visit **[cfa.vic.gov.au/plants](https://cfa.vic.gov.au/plants)** or call the VicEmergency Hotline on **1800 226 226**